

OLIVIA, MINNESOTA

AL-6301 (FAA)

20310

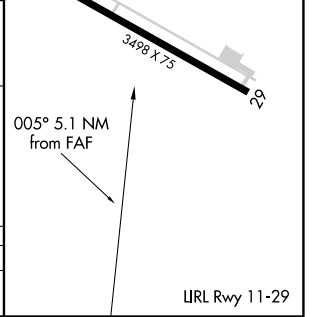
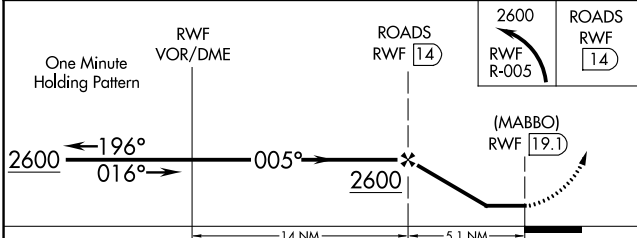
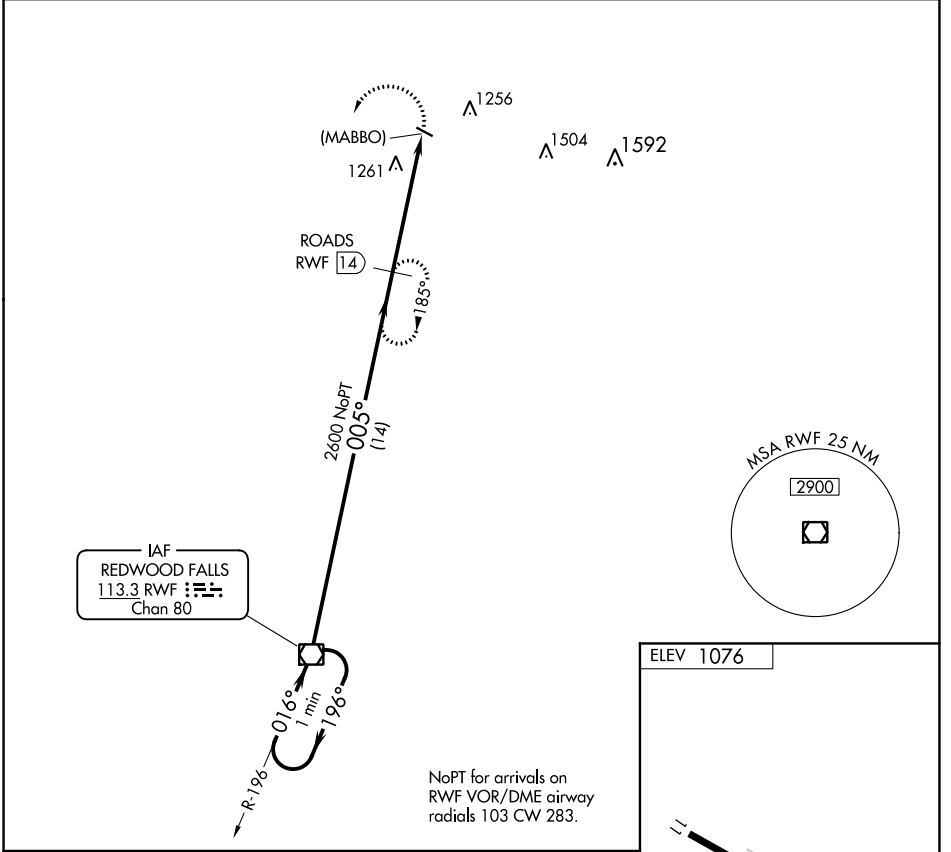
VOR/DME RWF 113.3 Chan 80	APP CRS 005°	Rwy Idg TDZE Apt Elev N/A N/A 1076
---	------------------------	--

VOR/DME or GPS-A

OLIVIA RGNL (OVL)

<p>▽</p> <p>△ NA</p>	<p>MISSED APPROACH: Climbing left turn to 2600 via RWF R-005 to ROADS 14 DME and hold.</p>
------------------------------------	--

<p>AWOS-3 119.275</p>	<p>MINNEAPOLIS CENTER 127.1 290.2</p>	<p>UNICOM 122.8 (CTAF)</p>
----------------------------------	--	---------------------------------------



CATEGORY	A	B	C	D
☐ CIRCLING	1620-1	544 (600-1)	1720-1¾ 644 (700-1¾)	1720-2 644 (700-2)

OLIVIA, MINNESOTA
Amdt 2B 27FEB20

44°47'N-95°02'W

VOR/DME or GPS-A

OLIVIA RGNL (OVL)

NC-1, 17 JUN 2021 to 15 JUL 2021

NC-1, 17 JUN 2021 to 15 JUL 2021