

WAAS CH 99725 W34A	APP CRS 335°	Rwy Idg TDZE Apt Elev	5310 665 689
--	------------------------	-----------------------------	---

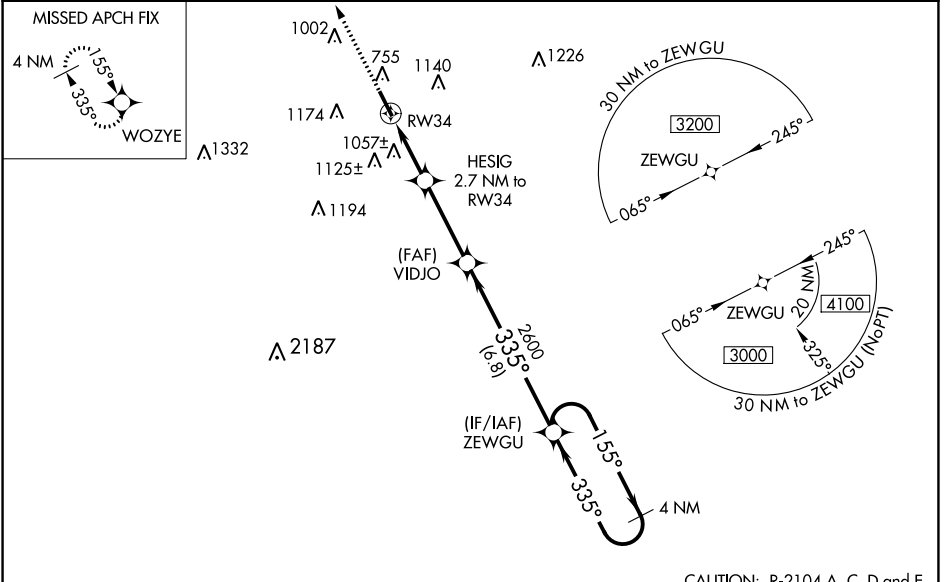
RNAV (GPS) RWY 34

ABERNATHY FIELD (GZS)

▼ Baro-VNAV NA when using Huntsville Executive Airport Tom Sharp Jr Field altimeter setting. For uncompensated Baro-VNAV systems, LNAV/VNAV NA below -1.6°C (4°F) or above 39°C (102°F).
▲ NA Night landing: Rwy 16 NA. DME/DME RNP-0.3 NA. Helicopter visibility reduction below 3/4 SM NA. When local altimeter setting not received, use Huntsville Executive Airport Tom Sharp Jr Field altimeter setting and increase all DA/MDA 80 feet; increase LPV all Cats and LNAV Cats C and D visibility 1/8 mile; increase LNAV/VNAV all Cats visibility 1/4 mile; increase Circling Cat C 1/2 mile and Cat D 1/4 mile. VDP NA with Huntsville Executive Airport Tom Sharp Jr Field altimeter setting.

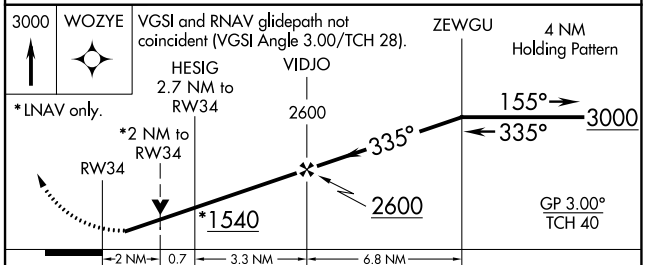
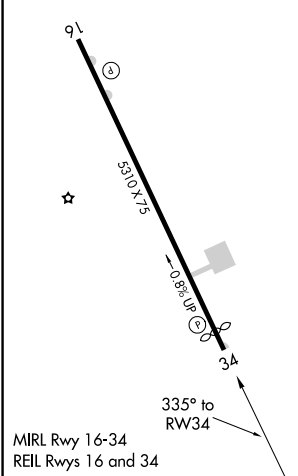
MISSED APPROACH:
Climb to 3000 direct WOZYE and hold.

AWOS-3 118.275	MEMPHIS CENTER 125.85 379.25	UNICOM 122.8 (CTAF)
--------------------------	--	-------------------------------



CAUTION: R-2104 A, C, D and E approximately 21 NM southeast of ZEWGU WP.

ELEV 689	TDZE 665
-----------------	-----------------



CATEGORY	A	B	C	D
LPV DA	915-1		250 (300-1)	
LNAV/VNAV DA	1443-2 ³ / ₄		778 (800-2 ³ / ₄)	
LNAV MDA	1320-1	655 (700-1)	1320-1 ⁷ / ₈	655 (700-1 ⁷ / ₈)
CIRCLING	1400-1	711 (800-1)	1420-2 731 (800-2)	1480-2 ¹ / ₂ 791 (800-2 ¹ / ₂)

SE-1, 17 JUN 2021 to 15 JUL 2021

SE-1, 17 JUN 2021 to 15 JUL 2021