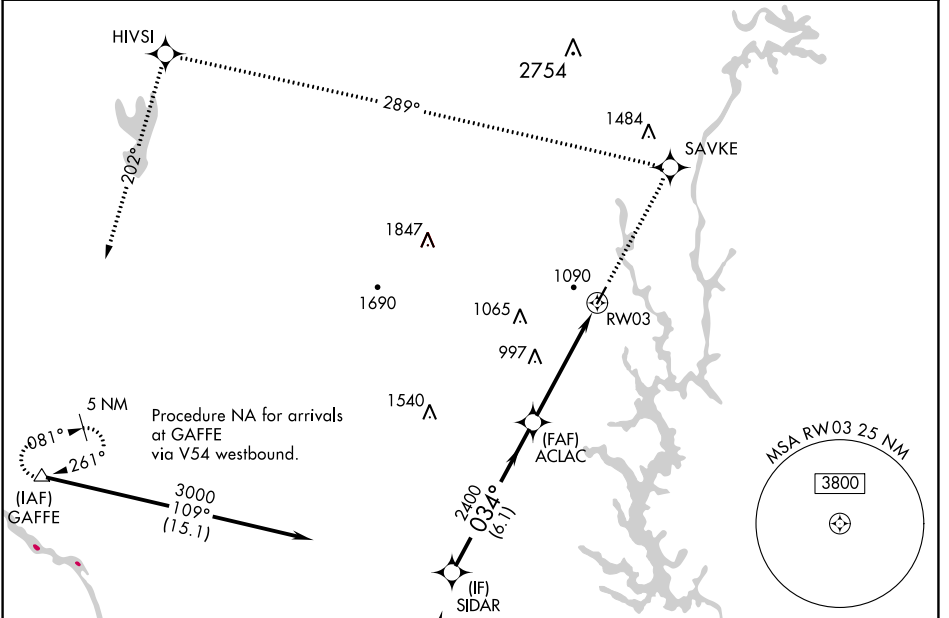


| | | | |
|--|------------------------|-----------------------------|---|
| WAAS CH 90302 W03A | APP CRS 034° | Rwy Idg TDZE Apt Elev | 3770 798 798 |
|--|------------------------|-----------------------------|---|

RNAV (GPS) RWY 3

GASTONIA MUNI (AKH)

| | | | |
|--|---|---------------------------------|---|
| RNP APCH. ▼ If local altimeter setting not received, use Charlotte Douglas Intl altimeter setting and increase all DAs/MDAs 40 feet. Inoperative table does not apply. | | ODALS | MISSED APPROACH: Climb to 3200 direct SAVKE and via 289° track to HIVSI and 202° track to GAFFE and hold. |
| ASOS 135.725 | CHARLOTTE APP CON 120.05 257.2 | CLNC DEL 127.2 | UNICOM 123.0 (CTAF) 0 |



SE-2, 17 JUN 2021 to 15 JUL 2021

SE-2, 17 JUN 2021 to 15 JUL 2021

| | | | | |
|--|------------|--|-------------------------|---------------|
| Procedure NA for arrivals at GAFFE via V54 westbound. | | Procedure NA for arrivals at LOCKS via V454 southwest bound. | | |
| VGSi and RNAV glidepath not coincident (VGSi Angle 3.00/TCH 26). | | 3200 SAVKE | HIVSI tr 289° | GAFFE tr 202° |
| Procedure Turn NA | SIDAR 3000 | ACLAC 2400 | RW03 | |
| GP 3.00° TCH 40 | 034° | 2400 | | |
| | 6.1 NM | 4.8 NM | | |
| CATEGORY | A | B | C | D |
| LPV DA | 1118-1¼ | 320 (400-1¼) | | NA |
| LNAV MDA | 1440-1 | 642 (700-1) | 1440-1¾ 642 (700-1¾) | NA |

