

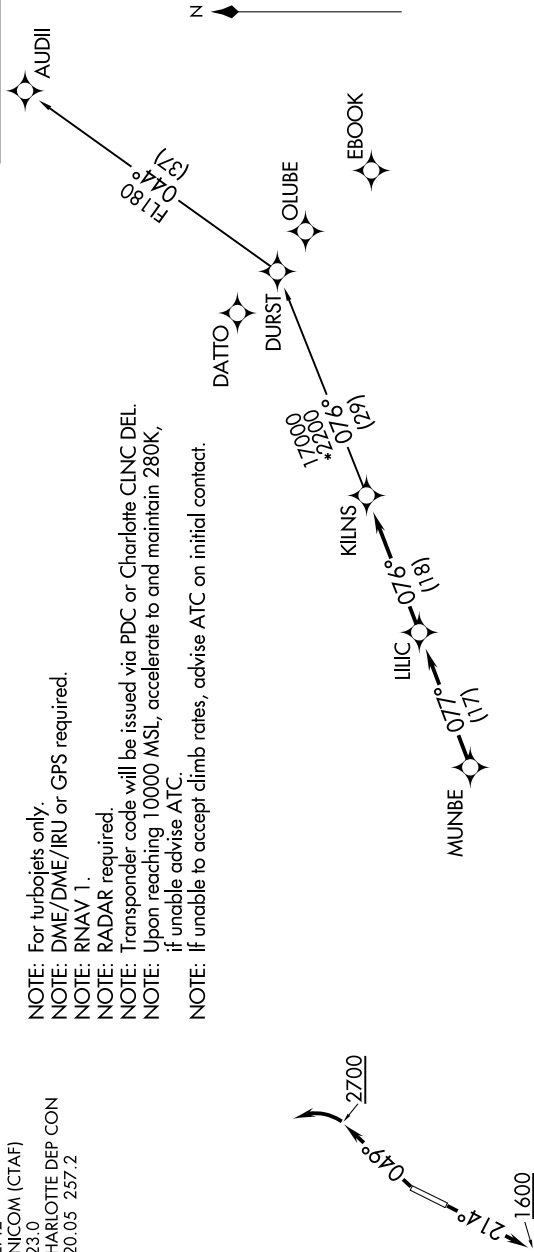
KILNS FOUR DEPARTURE (RNAV)

SE-2, 17 JUN 2021 to 15 JUL 2021

ASOS
135.725
CLNC DEL
127.2
UNICOM (CTAF)
123.0
CHARLOTTE DEP CON
120.05 257.2

- NOTE: For turbojets only.
- NOTE: DME/DME/IRU or GPS required.
- NOTE: RNAV 1.
- NOTE: RADAR required.
- NOTE: Transponder code will be issued via PDC or Charlotte CLNC DEL.
- NOTE: Upon reaching 10000 MSL, accelerate to and maintain 280K, if unable advise ATC.
- NOTE: If unable to accept climb rates, advise ATC on initial contact.

TOP ALTITUDE:
3000



TAKEOFF MINIMUMS
Rwys 3, 21: Standard.

DEPARTURE ROUTE DESCRIPTION

- TAKEOFF RWY 3:** Climb heading 049° to 2700 before turning left.
- TAKEOFF RWY 21:** Climb heading 214° to 1600 before proceeding north.

Climb on heading assigned by ATC, expect RADAR vectors to MUNBE, then on depicted route to KILNS, then on AUDII transition. Maintain 3000. Expect clearance to filed altitude within 10 minutes after departure.

AUDII TRANSITION (KILNS4.AUDII)

NOTE: Chart not to scale.

SE-2, 17 JUN 2021 to 15 JUL 2021