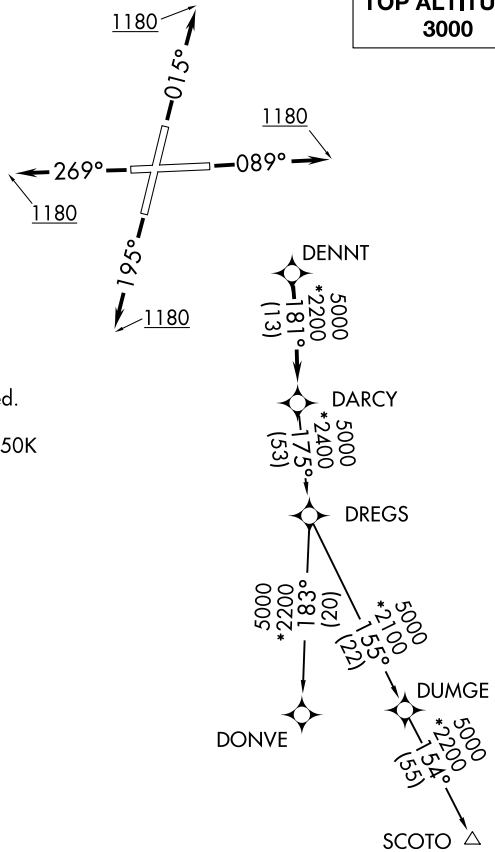


DARCY SIX DEPARTURE (RNAV)

AWOS-3
118.525
CHICAGO DEP CON
119.35 354.075

**TOP ALTITUDE:
3000**



TAKEOFF MINIMUMS:

Rwys 9, 20, 27: Standard.
Rwy 2: Standard with minimum climb
of 420' per NM to 1200.

- NOTE: RADAR required.
- NOTE: DME/DME/IRU or GPS required.
- NOTE: RNAV 1.
- NOTE: Turbojet departures maintain 250K until advised by ATC.

NOTE: Chart not to scale.

DEPARTURE ROUTE DESCRIPTION

- TAKEOFF RUNWAY 2:** Climb heading 015° to 1180, then as assigned by ATC, for vectors to DENNT. Thence. . . .
- TAKEOFF RUNWAY 9:** Climb heading 089° to 1180, then as assigned by ATC, for vectors to DENNT. Thence. . . .
- TAKEOFF RUNWAY 20:** Climb heading 195° to 1180, then as assigned by ATC, for vectors to DENNT. Thence. . . .
- TAKEOFF RUNWAY 27:** Climb heading 269° to 1180, then as assigned by ATC, for vectors to DENNT. Thence. . . .

. . . . on track 181° to DARCY, then on (transition). Maintain 3000.
Expect filed altitude 10 minutes after departure.

- DONVE TRANSITION (DARCY6.DONVE):
- SCOTO TRANSITION (DARCY6.SCOTO):