

WAAS CH <b>42718</b> <b>W36A</b>	APP CRS <b>360°</b>	Rwy ldg TDZE Apt Elev	<b>5001</b> <b>43</b> <b>47</b>
--	------------------------	-----------------------------	---------------------------------------

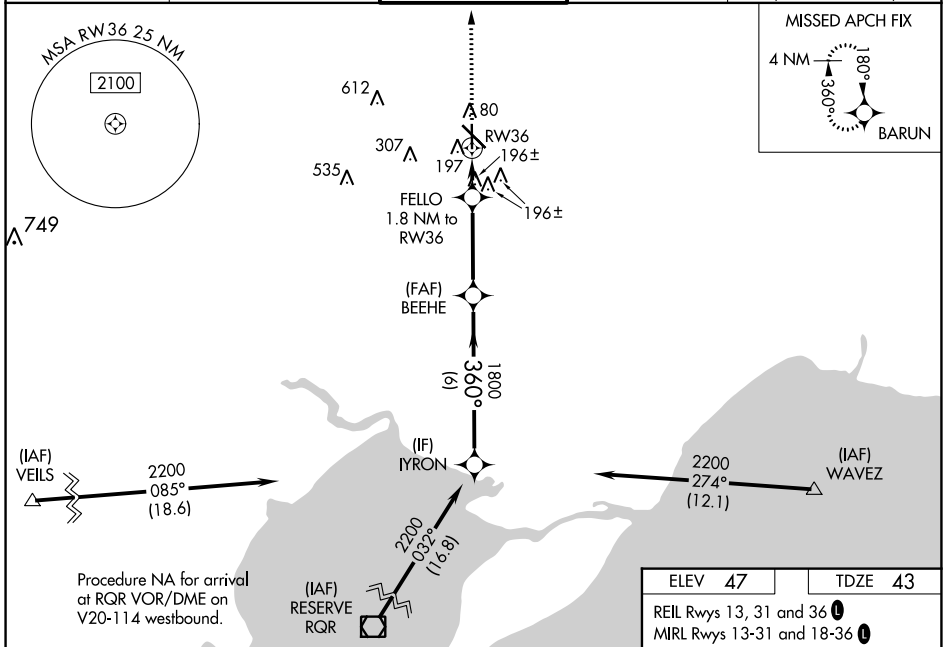
# RNAV (GPS) RWY 36

HAMMOND NORTHSORE RGNL (HDC)

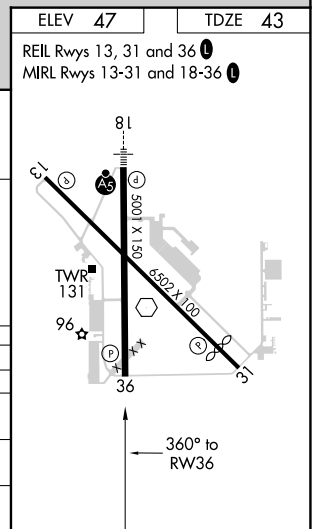
**▼** Baro-VNAV NA when using Louis Armstrong New Orleans Intl altimeter setting.  
**▲** For uncompensated Baro-VNAV systems, LNAV/VNAV NA below -15°C (5°F) or above 49°C (120°F). DME/DME RNP-0.3 NA. Visibility reduction by helicopters NA. When local altimeter setting not received, use Louis Armstrong New Orleans Intl altimeter setting and increase all DA 89 feet and all MDA 100 feet, increase LPV all Cats visibility ½ SM, LNAV/VNAV all Cats, LNAV Cat C and Circling Cat D visibility ¼ SM, and Circling Cat C ½ SM. VDP NA with Louis Armstrong New Orleans Intl altimeter setting.

MISSED APPROACH: Climb to 1800 direct BARUN and hold.

ATIS <b>118.325</b>	NEW ORLEANS APP CON <b>119.3 350.35</b>	<b>HAMMOND TOWER ★</b> <b>120.575 (CTAF) 0</b>	GND CON <b>119.85</b>	CLNC DEL <b>119.3</b> (When twr closed)
------------------------	--	---	--------------------------	---



Procedure Turn NA	YRON	BEEHE	FELLO 1.8 NM to RW36	1800	BARUN
	2200	1800	*1.2 NM to RW36		
	360°	1800	*660		
	GP 3.00°				
	TCH 52				
	6 NM	3.5 NM	0.6 NM	1.2 NM	
CATEGORY	A	B	C	D	
LPV DA		293-¾	250 (300-¾)		
LNAV/VNAV DA		447-1½	404 (400-1½)		
LNAV MDA	460-1	417 (500-1)	460-1¼	417 (500-1¼)	
CIRCLING	500-1	453 (500-1)	620-1½	920-2¾	
			573 (600-1½)	873 (900-2¾)	



SC-4, 17 JUN 2021 to 15 JUL 2021

SC-4, 17 JUN 2021 to 15 JUL 2021