

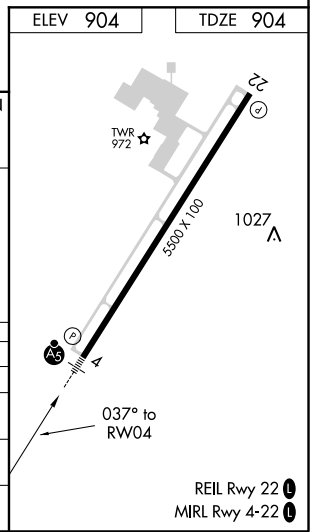
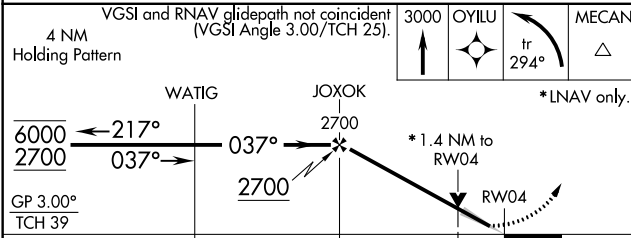
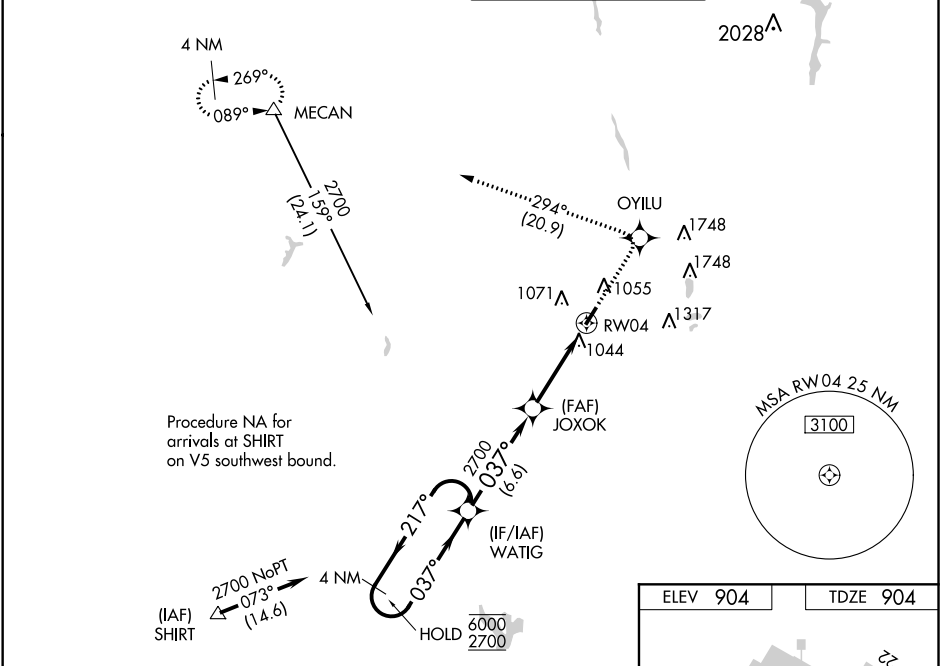
WAAS CH <b>90505</b> <b>W04A</b>	APP CRS <b>037°</b>	Rwy Idg <b>5500</b> TDZE <b>904</b> Apt Elev <b>904</b>
--	------------------------	---

# RNAV (GPS) RWY 4

BOLTON FLD (TZR)

RNP APCH.	MALSR	MISSED APPROACH: Climb to 3000 direct OYILU and left turn on track 294° to MECAN and hold.
<p>▼ For uncompensated Baro-VNAV systems, LNAV/VNAV NA below -16°C or above 54°C. For inop ALS, increase LNAV/VNAV all Cats visibility to 1 1/4 SM and LNAV Cats C/D visibility to 1 3/8 SM.</p>		

AWOS-3 <b>135.925</b>	COLUMBUS APP CON <b>134.0 279.6</b>	BOLTON TOWER ★ <b>128.1 (CTAF) 0</b>	GND CON <b>121.8</b>
--------------------------	--	---	-------------------------



CATEGORY	A	B	C	D
LPV DA	1163-1/2		259 (300-1/2)	
LNAV/VNAV DA	1325-1		421 (500-1)	
LNAV MDA	1360-1/2	456 (500-1/2)	1360-7/8 456 (500-7/8)	1360-1 456 (500-1)
CIRCLING	1360-1 456 (500-1)	1380-1 476 (500-1)	1380-1/2 476 (500-1/2)	1500-2 596 (600-2)

EC-2, 17 JUN 2021 to 15 JUL 2021

EC-2, 17 JUN 2021 to 15 JUL 2021