

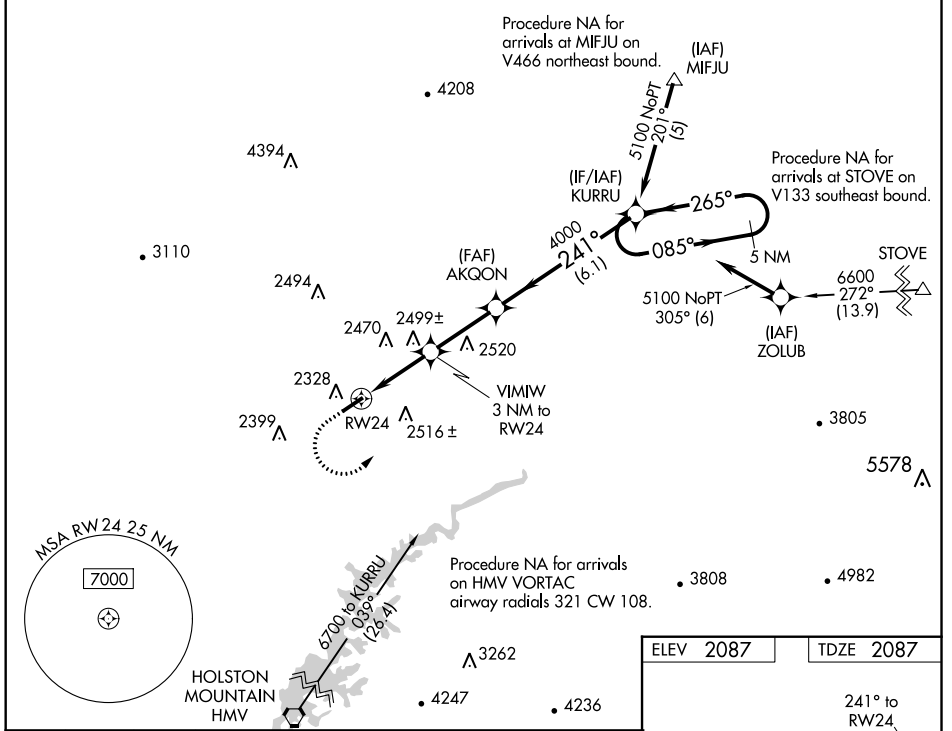
WAAS CH 77827 W24A	APP CRS 241°	Rwy Idg TDZE Apt Elev	4471 2087 2087
--	------------------------	-----------------------------	---

RNAV (GPS) RWY 24

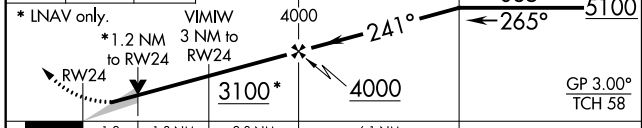
VIRGINIA HIGHLANDS (VJI)

<p>For uncompensated Baro-VNAV systems, LNAV/VNAV NA below -19°C (-2°F) or above 53°C (127°F). DME/DME RNP-0.3 NA. Inop table does not apply to LPV.</p>	ODALS	MISSED APPROACH: Climb to 2900 then climbing left turn to 5100 direct KURRU and hold.

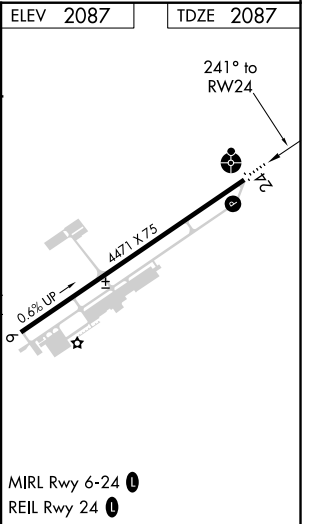
AWOS-3 128.125	TRI-CITY APP CON ★ 125.25 349.0	UNICOM 122.8 (CTAF) 0
--------------------------	---	---------------------------------



2900	5100	KURRU	VGSI and RNAV glidepath not coincident (VGSI Angle 4.00/TCH 32).	5 NM Holding Pattern
------	------	-------	--	----------------------



CATEGORY	A	B	C	D
LPV DA		2337-1	250 (300-1)	
LNAV/VNAV DA		2525-1¼	438 (500-1¼)	
LNAV MDA	2760-1	673 (700-1)	2760-1¾	673 (700-1¾)
CIRCLING	2860-1	773 (800-1)	2860-2¼	3080-3
			773 (800-2¼)	993 (1000-3)



NE-3, 17 JUN 2021 to 15 JUL 2021

NE-3, 17 JUN 2021 to 15 JUL 2021