

LOC/DME I-VJI 108.3 Chan 20	APP CRS 241°	Rwy Idg TDZE Apt Elev	4471 2087 2087
--	------------------------	-----------------------------	---

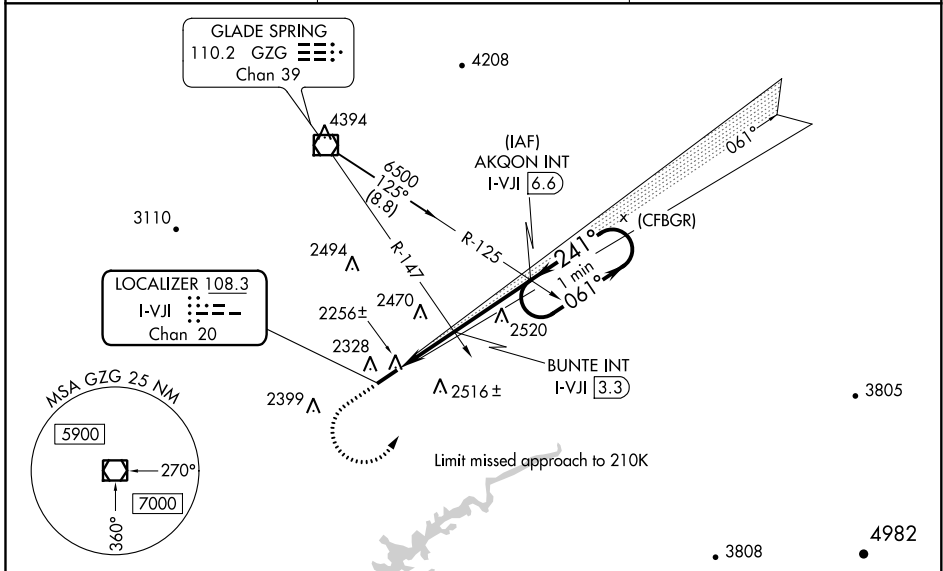
LOC RWY 24
VIRGINIA HIGHLANDS (VJI)

⚠ Inop table does not apply. GPS required. Cat D Straight-in minima NA when using Tri-Cities altimeter setting. When local altimeter setting not received; use Tri-Cities altimeter setting and increase all MDA 140 feet; and increase S-24 Cat A and B and Circling Cat B visibility ¼ mile, and S-24 Cat C and Circling Cat C visibility ½ mile. Increase BUNTE fix minimums S-24 Cat C visibility ⅜ mile, Circling Cats A and B visibility ¼ mile, and Circling Cat C visibility ½ mile. Helicopter visibility reduction below 1 SM NA.

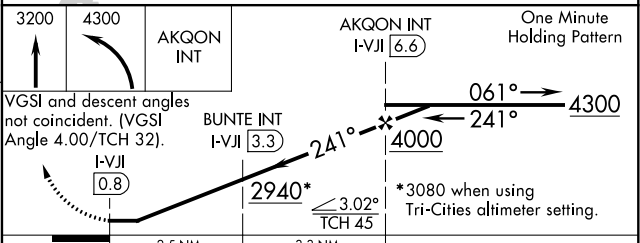
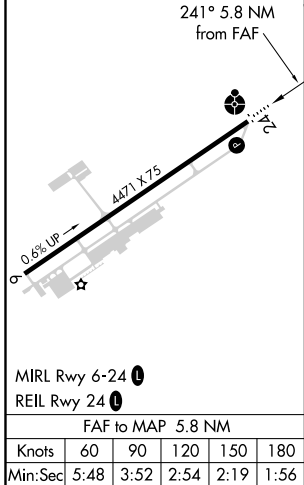


MISSED APPROACH: Climb to 3200 then climbing left turn to 4300 direct AKQON INT and hold.

AWOS-3 128.125	TRI-CITY APP CON ★ 125.25 349.0	UNICOM 122.8(CTAF) 0
--------------------------	---	--------------------------------



ELEV 2087	TDZE 2087
-----------	-----------



CATEGORY	A		B		C		D	
	S-24	2940-1	853 (900-1)	2940-1¼	853 (900-1¼)	2940-2½	853 (900-2½)	3080-3
C CIRCLING	2940-1¼	853 (900-1¼)	2940-2½	853 (900-2½)	3080-3	993 (1000-3)		
BUNTE FIX MINIMUMS								
S-24	2520-1	433 (500-1)	2520-1¼	433 (500-1¼)				
C CIRCLING	2860-1	773 (800-1)	2900-2½	813 (900-2½)	3080-3	993 (1000-3)		

NE-3, 17 JUN 2021 to 15 JUL 2021

NE-3, 17 JUN 2021 to 15 JUL 2021