

WAAS CH 60903 W28A	APP CRS 285°	Rwy Idg TDZE 967 Apt Elev 968	5456
--	------------------------	---	-------------

RNAV (GPS) RWY 28

STATESVILLE RGNL (SVH)

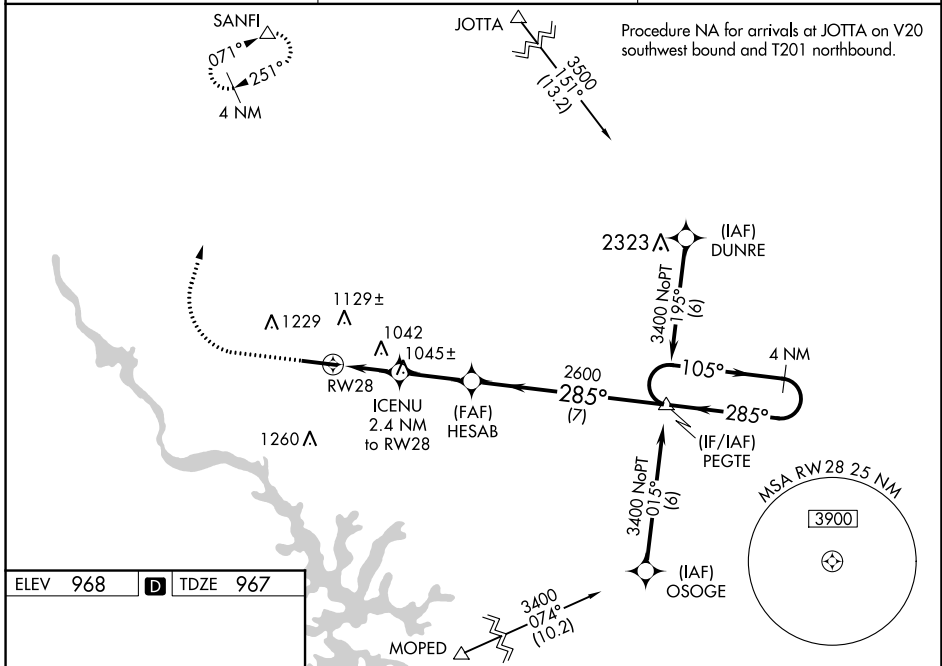
⚠ For uncompensated Baro-VNAV systems, LNAV/VNAV NA below -16°C (4°F) or above 54°C (130°F). DME/DME RNP-0.3 NA. When local altimeter setting not received, use Lincoln ton altimeter setting and increase LPV DA to 1218, LNAV/VNAV DA to 1269, and all MDA 60 feet; increase LNAV/VNAV all Cats and LNAV Cats C/D visibility 1/8, and Circling Cat C 1/4 mile. VDP and Baro-VNAV NA when using Lincoln ton altimeter setting. For inop MALS R, increase LNAV/VNAV all Cats and LNAV Cats C/D visibility to 7/8 mile. For inop MALS R when using Lincoln ton altimeter setting, increase LNAV/VNAV all Cats and LNAV Cats C/D visibility to 1 mile.

MALS R

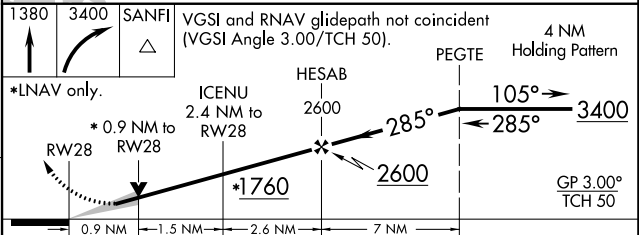
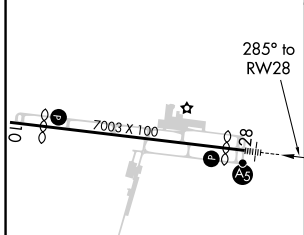


MISSED APPROACH:
Climb to 1380 then climbing right turn to 3400 direct SANFI and hold.

AWOS-3 119.225	ATLANTA CENTER 125.15 263.0	UNICOM 123.075 (CTAF) 0
--------------------------	---------------------------------------	-----------------------------------



ELEV 968	D	TDZE 967
----------	----------	----------



CATEGORY	A	B	C	D
LPV DA		1167-3/4	200 (200-3/4)	
LNAV/VNAV DA		1218-3/4	251 (300-3/4)	
LNAV MDA		1300-3/4	333 (400-3/4)	
C CIRCLING	1420-1 452 (500-1)	1540-1 572 (600-1)	1540-1 1/2 572 (600-1 1/2)	1560-2 592 (600-2)

SE-2, 17 JUN 2021 to 15 JUL 2021

SE-2, 17 JUN 2021 to 15 JUL 2021