

WAAS CH 99435 W10A	APP CRS 105°	Rwy Idg TDZE 968 Apt Elev 968
--	------------------------	---

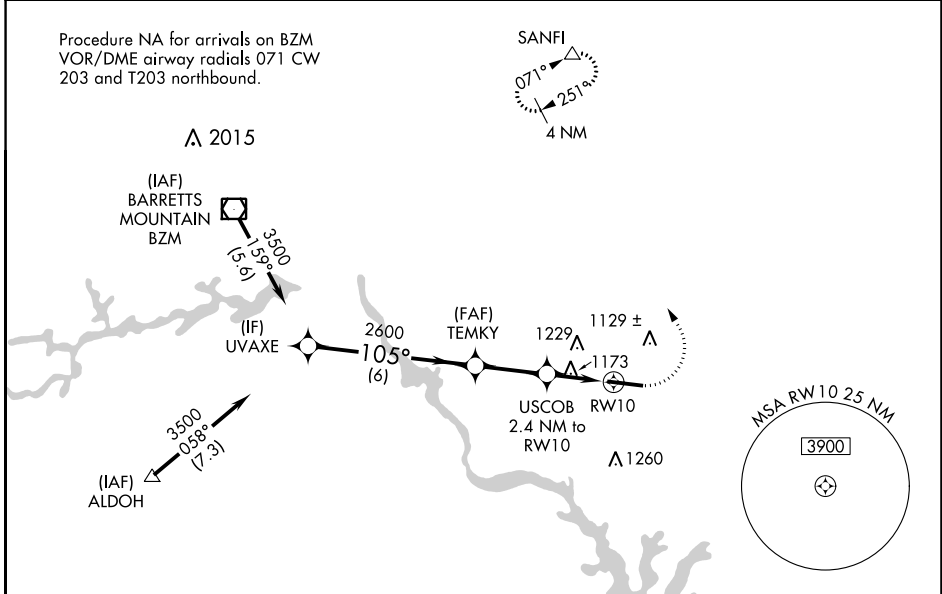
RNAV (GPS) RWY 10

STATESVILLE RGNL (SVH)

⚠ Baro-VNAV NA when using Lincolnton altimeter setting. For uncompensated Baro-VNAV systems, LNAV/VNAV NA below -1.6°C (4°F) or above 54°C (130°F). DME/DME RNP-0.3 NA.
⚠ Rwy 10 helicopter visibility reduction below ¼ SM NA. When local altimeter setting not received, use Lincolnton altimeter setting and increase LPV DA to 1263, LNAV/VNAV DA to 1431, and all MDA 60 feet; increase LNAV/VNAV all Cats, LNAV Cats C/D, and Circling Cat C visibility ¼ mile.

MISSED APPROACH: Climb to 1440 then climbing left turn to 3400 direct SANFI and hold.

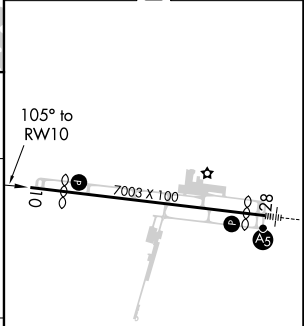
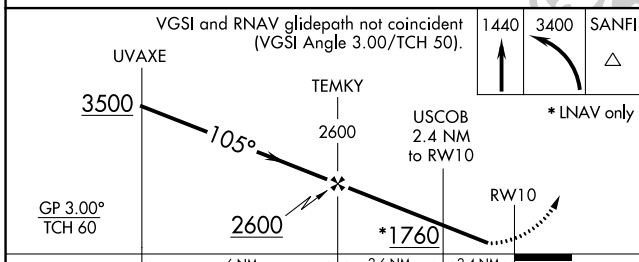
AWOS-3 119.225	ATLANTA CENTER 125.15 263.0	UNICOM 123.075 (CTAF) 0
--------------------------	---------------------------------------	-----------------------------------



SE-2, 17 JUN 2021 to 15 JUL 2021

SE-2, 17 JUN 2021 to 15 JUL 2021

ELEV 968	D TDZE 968
----------	-------------------



CATEGORY	A	B	C	D
LPV DA		1218-1	250 (300-1)	
LNAV/VNAV DA		1386-1 3/8	418 (500-1 3/8)	
LNAV MDA	1440-1	472 (500-1)	1440-1 3/8	472 (500-1 3/8)
C CIRCLING	1440-1 472 (500-1)	1540-1 572 (600-1)	1540-1 1/2 572 (600-1 1/2)	1560-2 592 (600-2)

REIL Rwy 10 **0**
 HIRL Rwy 10-28 **0**