

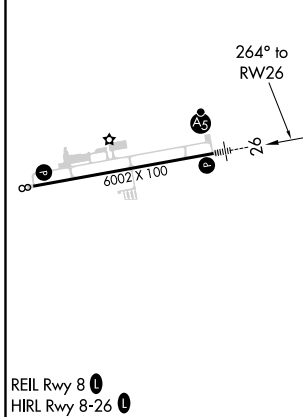
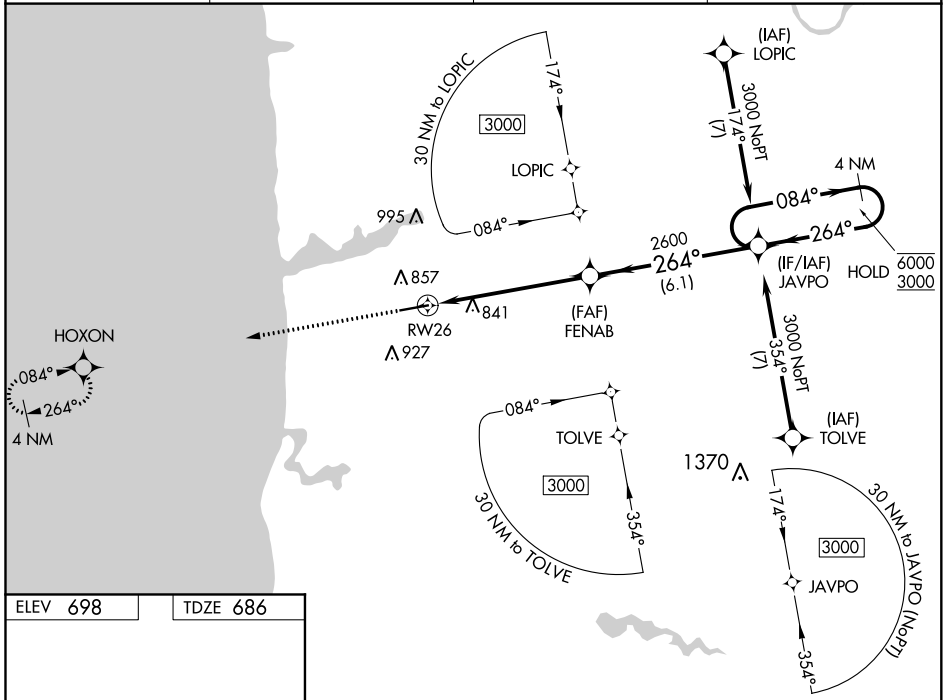
WAAS CH 53402 W26A	APP CRS 264°	Rwy Idg TDZE Apt Elev	6002 686 698
--	------------------------	-----------------------------	---

RNAV (GPS) RWY 26

WEST MICHIGAN RGNL (BIV)

RNP APCH.	MALSRS	MISSED APPROACH: Climb to 2700 direct HOXON and hold.
<p>▼ For uncompensated Baro-VNAV systems, LNAV/VNAV NA below -16°C or above 54°C. ▲ For inoperative ALS, increase LNAV/VNAV all Cats visibility to 1 SM; increase LNAV Cat C visibility to 1½ SM.</p>		

ASOS 119.025	GREAT LAKES APP CON* 133.825 290.35	CLNC DEL 123.95	UNICOM 123.05 (CTAF)
------------------------	---	---------------------------	--------------------------------



	2700	HOXON	*LNAV only	FENAB	JAVPO	4 NM Holding Pattern
			*1.2 NM to RWY 26	2600	2600	6000 / 3000
			1.2	4.7 NM	6.1 NM	GP 3.00° TCH 32
CATEGORY	A	B	C	D		
LPV DA	886-½	200 (200-½)			NA	
LNAV/VNAV DA	1040-⅝	354 (400-⅝)			NA	
LNAV MDA	1100-½	414 (500-½)	1100-¾	414 (500-¾)	NA	
CIRCLING	1200-1	1240-1	1240-1½	542 (600-1½)	NA	
	502 (600-1)	542 (600-1)	542 (600-1½)			

EC-1, 17 JUN 2021 to 15 JUL 2021

EC-1, 17 JUN 2021 to 15 JUL 2021