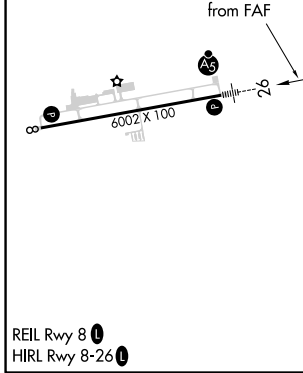
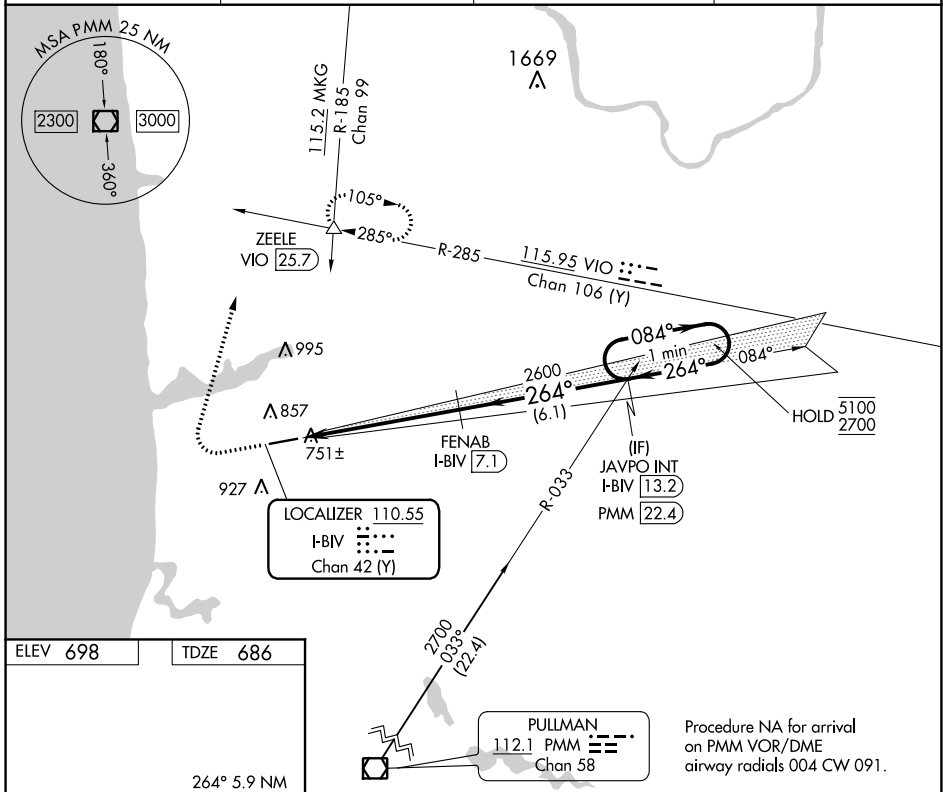


LOC/DME I-BIV <b>110.55</b> Chan 42 (Y)	APP CRS <b>264°</b>	Rwy Idg 6002	TDZE 686	Apt Elev 698
---	------------------------	-----------------	-------------	-----------------

# ILS or LOC RWY 26

WEST MICHIGAN RGNL (BIV)

DME required. NA		MALSRL AS	MISSED APPROACH: Climb to 1500 then climbing right turn to 2600 on heading 020° and VIO VOR/DME R-285 to ZEELE/VIO 25.7 DME and hold.	
ASOS <b>119.025</b>	GREAT LAKES APP CON* <b>133.825 290.35</b>	CLNC DEL <b>123.95</b>	UNICOM <b>123.05 (CTAF)</b>	



*LOC only	*I-BIV 2.1	*I-BIV 1.2	2600	264°	084°	5100	2700
CATEGORY	A	B	C	D			
S-ILS 26	886-1/2	200 (200-1/2)		NA			
S-LOC 26	1020-1/2	334 (400-1/2)		NA			
CIRCLING	1200-1 502 (600-1)	1240-1 542 (600-1)	1240-1 1/2 542 (600-1 1/2)	NA			

EC-1, 17 JUN 2021 to 15 JUL 2021

EC-1, 17 JUN 2021 to 15 JUL 2021