

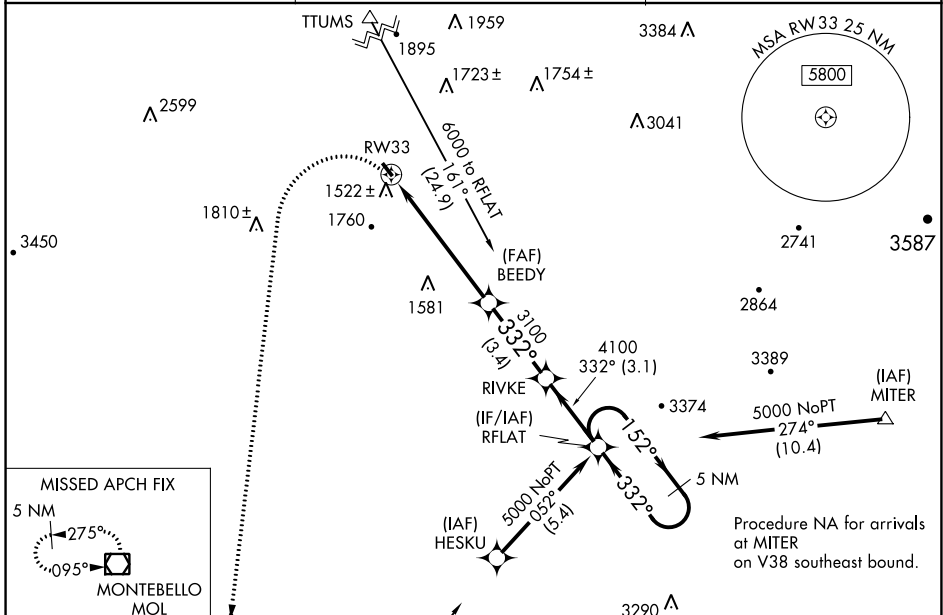
APP CRS 332°	Rwy Idg 2377
	TDZE 1165
	Apt Elev 1165

RNAV (GPS) RWY 33

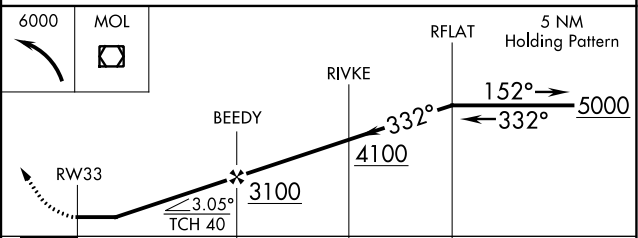
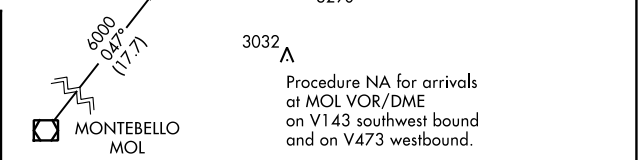
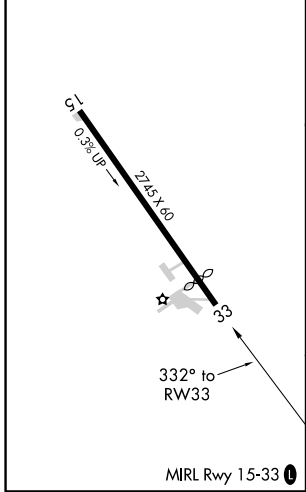
BRIDGEWATER AIR PARK (VBW)

<p>NA</p> <p>DME/DME RNP-0.3 NA. Helicopter visibility reduction below 3/4 SM NA. When local altimeter setting not received, use Staunton/Waynesboro/Harrisonburg altimeter setting and increase all MDA 40 feet.</p>	<p>MISSED APPROACH: Climbing left turn to 6000 direct MOL VOR/DME and hold.</p>
--	---

<p>AWOS-3 119.55</p>	<p>POTOMAC APP CON 132.85 323.125</p>	<p>UNICOM 122.7 (CTAF)</p>
---------------------------------	--	---------------------------------------



ELEV 1165	TDZE 1165
-----------	-----------



<p>6000</p> <p>MOL</p>	<p>RFLAT</p> <p>5 NM Holding Pattern</p>
<p>RW33</p> <p>BEEDY</p> <p>RIVKE</p> <p>3100</p> <p>4100</p> <p>5000</p>	<p>332°</p> <p>152°</p> <p>332°</p>
<p>5.9 NM</p> <p>3.4 NM</p> <p>3.1 NM</p>	
<p>CATEGORY</p>	<p>A</p> <p>B</p> <p>C</p> <p>D</p>
<p>LNAV MDA</p>	<p>1780-1</p> <p>615 (700-1)</p> <p>NA</p>
<p>CIRCLING</p>	<p>1860-1</p> <p>695 (700-1)</p> <p>2020-1 1/4</p> <p>855 (900-1 1/4)</p> <p>NA</p>

NE-3, 17 JUN 2021 to 15 JUL 2021

NE-3, 17 JUN 2021 to 15 JUL 2021