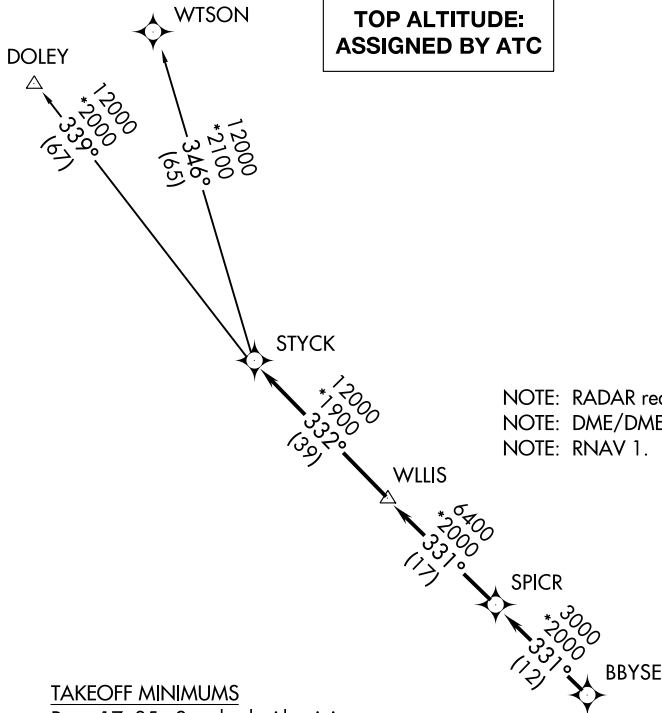


STYCK SEVEN DEPARTURE (RNAV)

HOUSTON, TEXAS

**TOP ALTITUDE:
ASSIGNED BY ATC**

ATIS ★
 118.125
 CLNC DEL
 121.4
 CLNC DEL (when twr closed)
 119.25
 GND CON
 121.4
 SUGARLAND TOWER ★
 118.65 (CTAF)
 HOUSTON DEP CON
 123.8 257.7



NOTE: RADAR required.
 NOTE: DME/DME/IRU or GPS required.
 NOTE: RNAV 1.

TAKEOFF MINIMUMS

Rwys 17, 35: Standard with minimum climb of 500' per NM to 600.

NOTE: Chart not to scale.

DEPARTURE ROUTE DESCRIPTION

TAKEOFF RWY 17: Climb heading 170° to 1500 for RADAR vectors to BBYSE, thence. . .

TAKEOFF RWY 35: Climb heading 350° to 1100 for RADAR vectors to BBYSE, thence. . .

. . . on track 331° to SPICR, then on track 331° to WLLIS, then on track 332° to STYCK, then on (transition). Maintain ATC assigned altitude. Expect filed altitude 10 minutes after departure.

DOLEY TRANSITION (STYCK7.DOLEY)

WTSON TRANSITION (STYCK7.WTSON)

STYCK SEVEN DEPARTURE (RNAV)

(STYCK7.STYCK) 25APR19

HOUSTON, TEXAS

SUGAR LAND RGNL (SGR)

SC-5, 17 JUN 2021 to 15 JUL 2021

SC-5, 17 JUN 2021 to 15 JUL 2021