

WAAS CH 56219 W35A	APP CRS 350°	Rwy Idg 6016 TDZE 78 Apt Elev 82
--	------------------------	---

RNAV (GPS) RWY 35

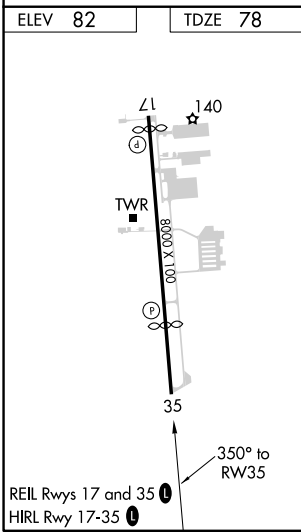
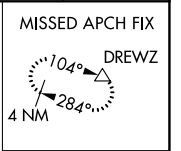
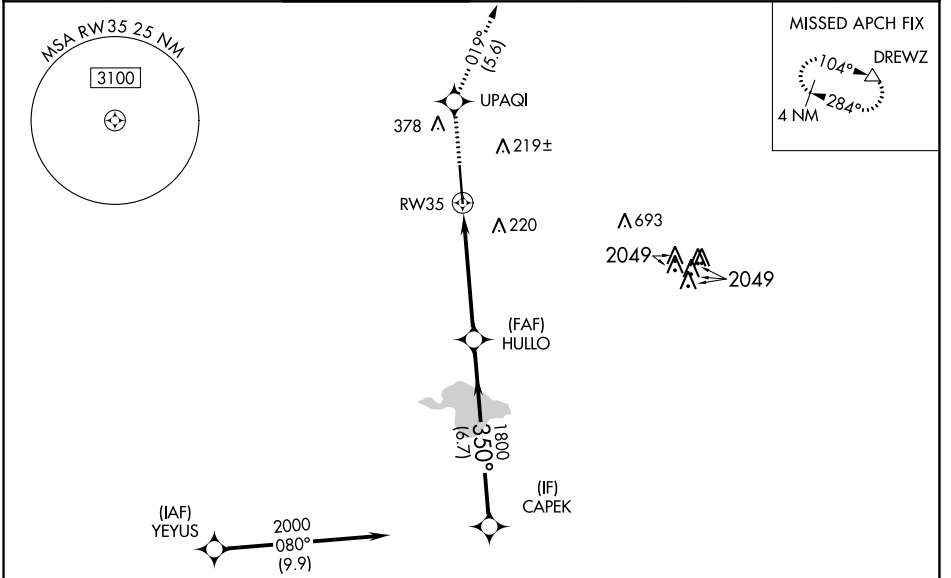
SUGAR LAND RGNL (SGR)

RNP APCH.

▼ For uncompensated Baro-VNAV systems, LNAV/VNAV NA below -15°C (5°F) or above 43°C (109°F).
▲ Baro-VNAV and VDP NA when using William P Hobby altimeter setting. When local altimeter setting not received, use William P Hobby altimeter setting; increase all DA 51 feet; increase all MDA 60 feet and increase LNAV-VNAV all Cats visibility to 1¾, LNAV Cat C/D visibility to 1½, and Circling Cat C visibility to 2, Cat D to 2¼. When VGSI inop, Circling Rwy 17 NA at night.

MISSED APPROACH:
Climb to 2000 direct UPAQI and on track 019° to DREWZ and hold.

ATIS★ 118.125	HOUSTON APP CON 123.8 257.7	SUGAR LAND TOWER★ 118.65 (CTAF) 0	GND CON 121.4	CLNC DEL 121.4	CLNC DEL 119.25 (when twr closed)	UNICOM 122.95
-------------------------	---------------------------------------	--	-------------------------	--------------------------	--	-------------------------



RADAR REQUIRED

2000	UPAQI	DREWZ	CAPEK	
↑	✦	tr 019°	△	
* LNAV only.				
* 1.7 NM to RW35		HULLO 1800	2000	
RW35		350°	1800	
1.7		3.5 NM	6.7 NM	
GP 3.00° TCH 56				
CATEGORY	A	B	C	D
LPV DA	278-¾ 200 (200-¾)			
LNAV/VNAV DA	567-1½ 489 (500-1½)			
LNAV MDA	660-1 582 (600-1)		660-1¾ 582 (600-1¾)	
C CIRCLING	720-1 638 (700-1)		720-2 638 (700-2)	

SC-5, 17 JUN 2021 to 15 JUL 2021

SC-5, 17 JUN 2021 to 15 JUL 2021