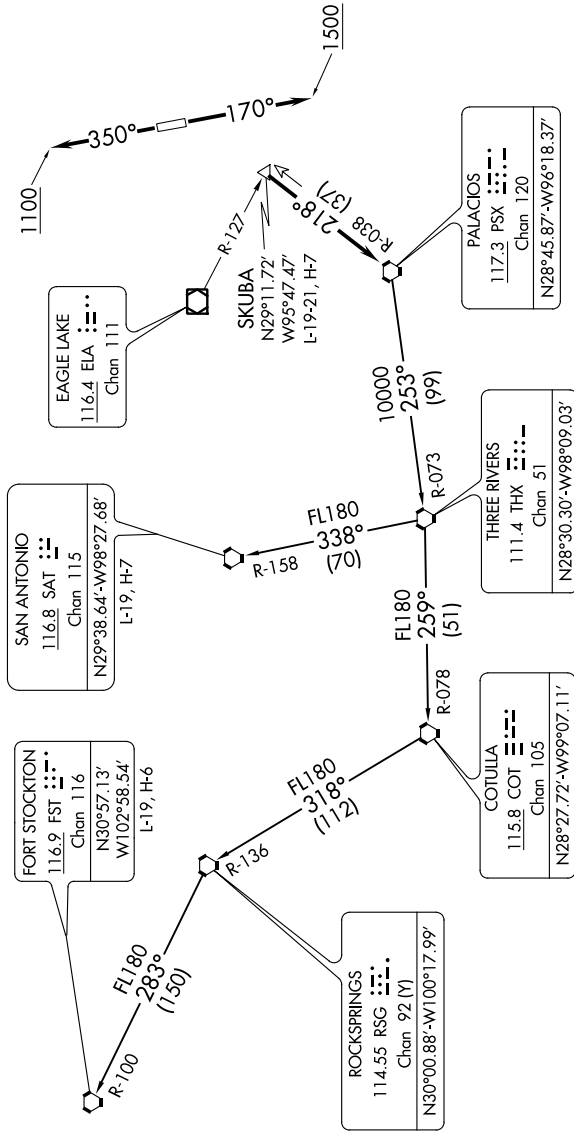


SC-5, 17 JUN 2021 to 15 JUL 2021

TOP ALTITUDE:  
ASSIGNED BY ATC

TAKEOFF MINIMUMS  
Rwy 17, 35: Standard.

ATIS \*  
 118.125  
 CLNC DEL  
 121.4  
 CLNC DEL (when twr closed)  
 119.25  
 GND CON  
 121.4  
 SUGAR LAND TOWER \*  
 118.65 (CTAF)  
 HOUSTON DEP CON  
 123.8 257.7



(NARRATIVE ON FOLLOWING PAGE)

NOTE: RADAR required.  
NOTE: Chart not to scale.

SC-5, 17 JUN 2021 to 15 JUL 2021