

BORRN FOUR DEPARTURE (RNAV)

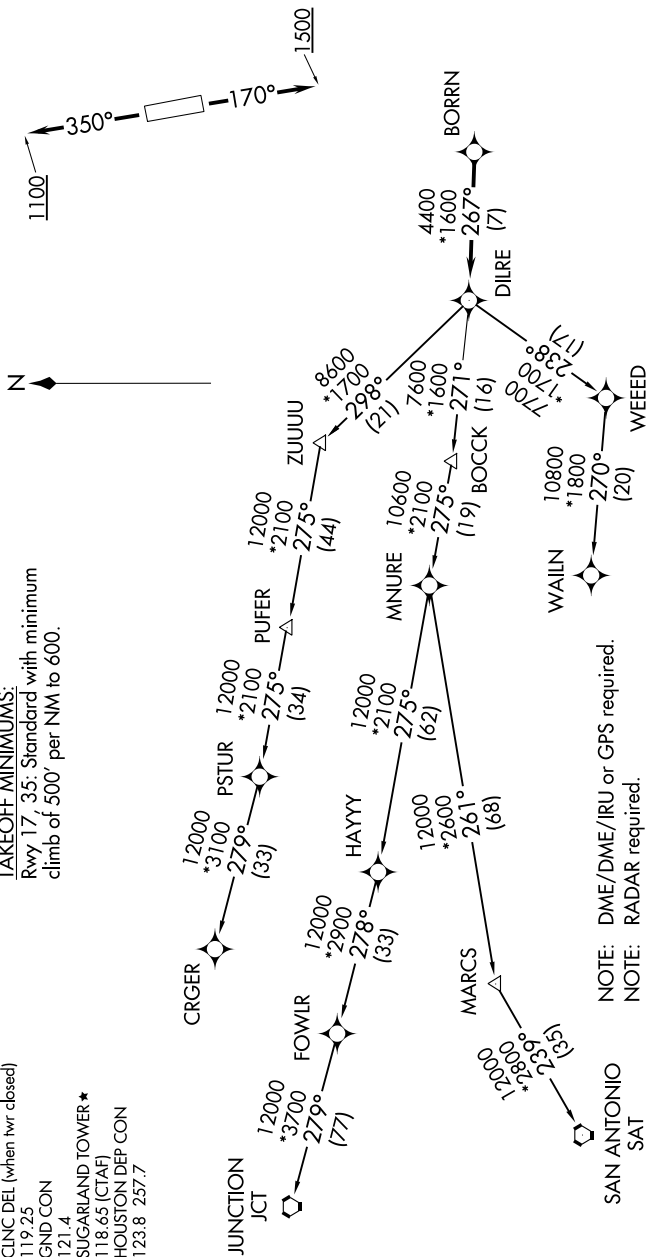
SC-5, 17 JUN 2021 to 15 JUL 2021

- ATIS *
- 118.125
- CLNC DEL
- 121.4
- CINC DEL (when hvr closed)
- 119.25
- GND CON
- 121.4
- SUGARLAND TOWER *
- 118.65 (CTAF)
- HOUSTON DEP CON
- 123.8 257.7

TAKEOFF MINIMUMS:

Rwy 17, 35: Standard with minimum climb of 500' per NM to 600.

TOP ALTITUDE:
ASSIGNED BY ATC



- NOTE: DME/DME/IRU or GPS required.
- NOTE: RADAR required.
- NOTE: RNAV 1.
- NOTE: CRGR TRANSITION ATC assigned only for aircraft departing 54T, AXH, EFD, GLS, HPY, IWS, LBX, LVJ, SGR, TME, T00, T41.

(NARRATIVE ON FOLLOWING PAGE)

NOTE: Chart not to scale.

SC-5, 17 JUN 2021 to 15 JUL 2021

BORRN FOUR DEPARTURE (RNAV)