

VORTAC SVM 114.3 Chan 90	APP CRS 213°	Rwy ldg TDZE 3505 831	Apt Elev 839
--	------------------------	---	------------------------

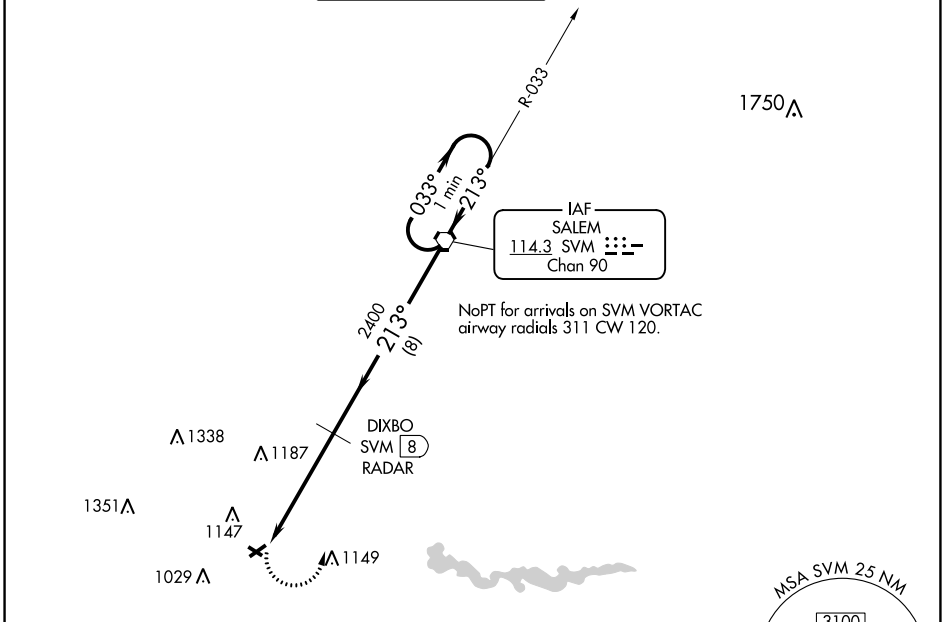
VOR RWY 24

ANN ARBOR MUNI (ARB)

⚠ Inop table does not apply. Rwy 24 helicopter visibility reduction below 3/4 SM NA.
 ⚠ When local altimeter setting not received, use Willow Run altimeter setting and increase all MDAs 40 feet and increase visibility S-24 Cat C/D visibility 1/8 SM and Circling Cat C/D visibility 1/4 SM. Circling NA to Rwy 12 and 30.

MISSED APPROACH: Climbing left turn to 3000 direct SVM VORTAC and hold.

ATIS 134.55	DETROIT APP CON 118.95 284.0	ANN ARBOR TOWER ★ 120.3 (CTAF) 0	GND CON 121.6	CLNC DEL 121.6	UNICOM 123.0
-----------------------	--	--	-------------------------	--------------------------	------------------------



ELEV 839	TDZE 831
213° 4.7 NM from FAF	
MIRL Rwy 6-24 0	
REIL Rwy 6 0	
FAF to MAP 4.7 NM	
Knots	60 90 120 150 180
Min:Sec	4:42 3:08 2:21 1:53 1:34

DME or RADAR REQUIRED

3000 SVM

VGSI and descent angles not coincident (VGSI Angle 3.00/TCH 20).

DIXBO SVM RADAR

SVM VORTAC

One Minute Holding Pattern

CATEGORY	A	B	C	D
S-24	1460-1	629 (700-1)	1460-1 ³ / ₄ 629 (700-1 ³ / ₄)	1460-1 ³ / ₄ 629 (700-1 ³ / ₄)
CIRCLING	1500-1	661 (700-1)	1500-1 ³ / ₄ 661 (700-1 ³ / ₄)	1500-2 661 (700-2)

EC-1, 17 JUN 2021 to 15 JUL 2021

EC-1, 17 JUN 2021 to 15 JUL 2021