

(KAYLN2.KAYLN) 19227

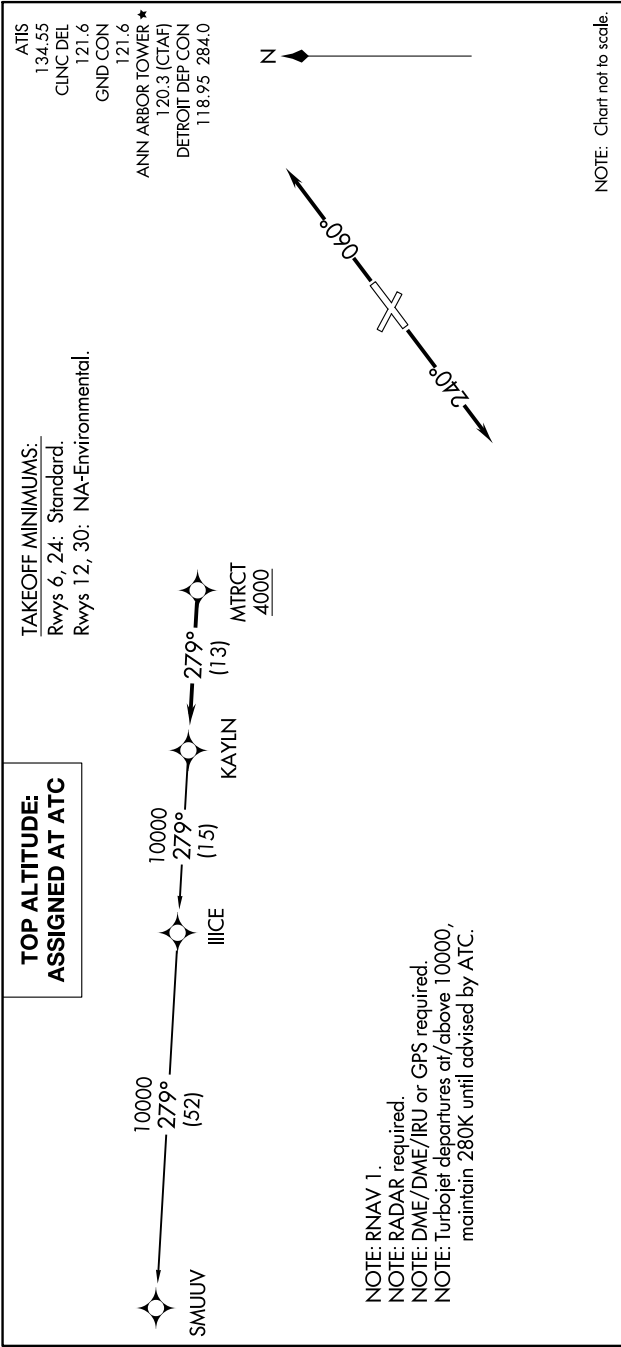
# KAYLN TWO DEPARTURE (RNAV)

AL-5506 (FAA)

ANN ARBOR MUNI (ARB)

ANN ARBOR, MICHIGAN

EC-1, 17 JUN 2021 to 15 JUL 2021



## DEPARTURE ROUTE DESCRIPTION

**TAKEOFF RUNWAY 6:** Climb on heading 060° or as assigned for RADAR vectors to cross MTRCT at or above 4000, thence....

**TAKEOFF RUNWAY 24:** Climb on heading 240° or as assigned for RADAR vectors to cross MTRCT at or above 4000, thence....

....on track 279° to KAYLN, then on (transition). Maintain ATC assigned altitude, expect filed altitude 10 minutes after departure.

SMUUV TRANSITION (KAYLN2.SMUUV):

# KAYLN TWO DEPARTURE (RNAV)

(KAYLN2.KAYLN) 15AUG19

ANN ARBOR, MICHIGAN

ANN ARBOR MUNI (ARB)

EC-1, 17 JUN 2021 to 15 JUL 2021