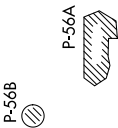


SCRAM SIX DEPARTURE (RNAV)

1200 JUN 2021 to 15 JUL 2021

TOP ALTITUDE:
3000



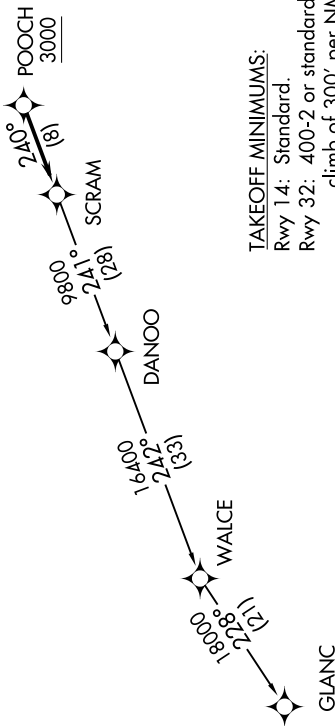
DEPARTURE ROUTE DESCRIPTION

Climb on heading assigned by ATC, expect RADAR vectors to POOCH, then on track 240° to SCRAM, thence....
...as depicted. Maintain 3000, expect clearance to filed altitude within ten (10) minutes after departure.

GLANCC TRANSITION (SCRAM6.GLANCC):

- ATIS 128.175
- CINCDL 351.8
- GND CON 121.9 351.8
- DAVISON TOWER ★ 126.3 (CTAF) 229.4
- POTOMAC DEP CON 118.95 257.2

- NOTE: RNAV 1.
- NOTE: RADAR required.
- NOTE: DME/DME/IRU or GPS required.
- NOTE: Turbojets only.



TAKEOFF MINIMUMS:
 Rwy 14: Standard.
 Rwy 32: 400-2 or standard with minimum climb of 300' per NM to 500.

NOTE: Chart not to scale.

NE-3, 17 JUN 2021 to 15 JUL 2021