

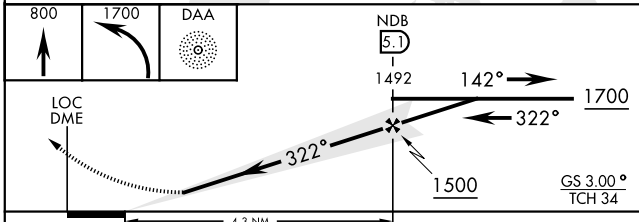
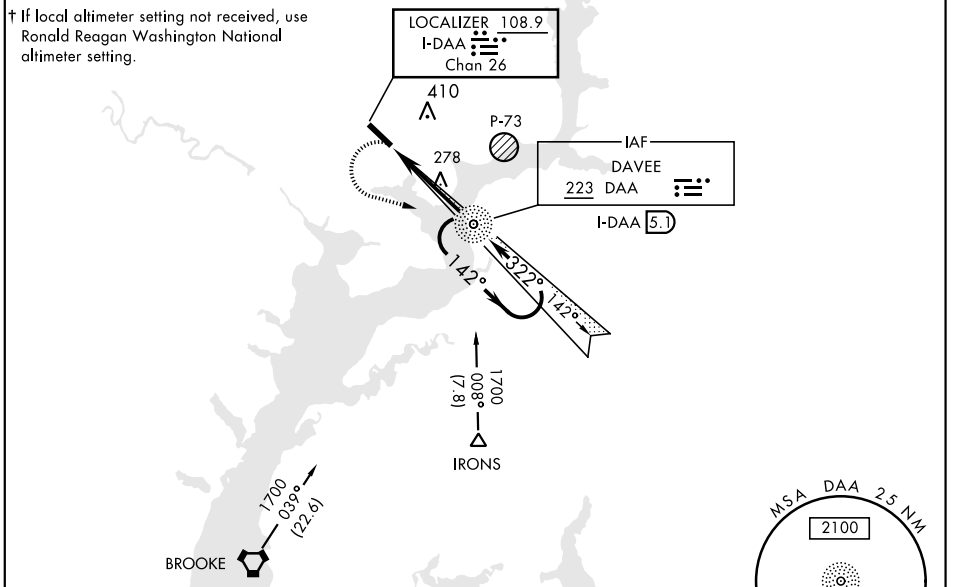
ILS or LOC RWY 32

LOC/DME I-DAA 108.9 Chan 26	APCH CRS 322°	Rwy Idg TDZE 68 Arprt Elev 74	AL-5504 [USA]	DAVISON AAF (KDAV)
---	-------------------------	---	---------------	--------------------

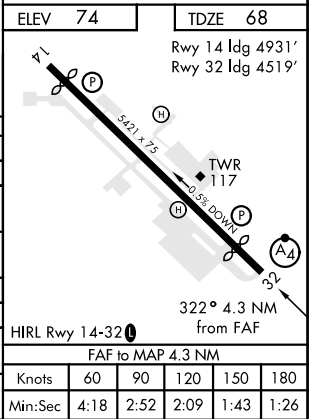
ADF required.	MALSF (A4)	MISSED APPROACH: Climb to 800, then climbing left turn to 1700 direct DAA NDB and hold; or when directed by ATC, climb to 800, then climbing left turn to 2000 hdg 190° within 10 NM, expect RADAR vectors.
---------------	---------------	---

ATIS 128.175	POTOMAC APP CON 118.95 319.1	DAVISON TOWER ★ 126.3 (CTAF) 0229.4	GND CON 121.9 351.8	CLNC DEL 351.8	PAR
------------------------	--	---	-------------------------------	--------------------------	-----

Visibility reduction by helicopters NA.
Inoperative table does not apply to S-32 CAT A and B.



ELEV 74	TDZE 68
Rwy 14 Idg 4931' Rwy 32 Idg 4519'	
HIRL Rwy 14-32 (0)	
FAF to MAP 4.3 NM	
Knots	60 90 120 150 180
Min:Sec	4:18 2:52 2:09 1:43 1:26



ILS or LOC RWY 32

NE-3, 17 JUN 2021 to 15 JUL 2021

NE-3, 17 JUN 2021 to 15 JUL 2021