

WAAS CH 82606 W36A	APP CRS 005°	Rwy Idg 12600 TDZE 615 Apt Elev 629
--	------------------------	--

RNAV (GPS) RWY 36L


HUNTSVILLE INTL-CARL T JONES FLD (HSV)

RNP APCH.

ASR

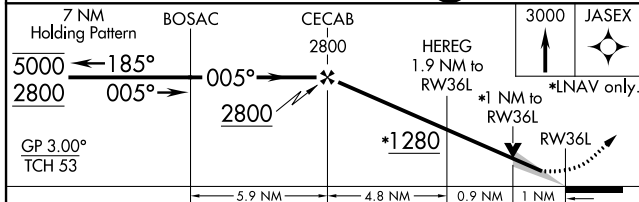
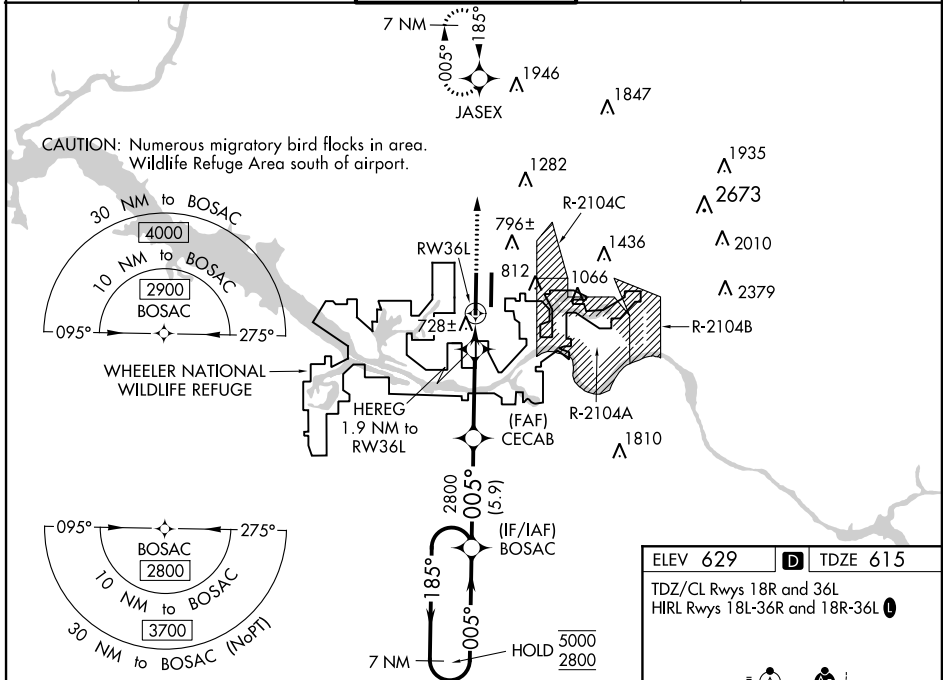
For uncompensated Baro-VNAV systems, LNAV/VNAV NA below -10°C or above 54°C. For inop ALS, increase LPV Cat E visibility to RVR 4000, LNAV/VNAV all Cats visibility to RVR 4500, and LNAV Cats C/D/E visibility to RVR 5500. Circling NA for Cats C/D/E east of Rwy 18L-36R. Simultaneous approach authorized. LNAV procedure NA during simultaneous operations. Use of FD or AP required during simultaneous operations.

MALSRS



MISSED APPROACH: Climb to 3000 direct JASEX and hold.

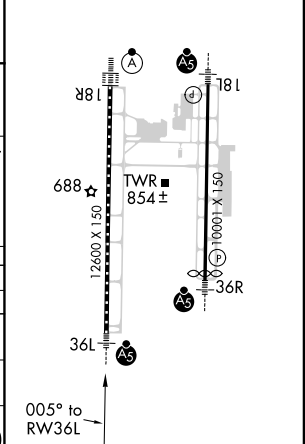
ATIS 121.25	HUNTSVILLE APP CON ★ 125.6 354.1	HUNTSVILLE TOWER ★ 127.6 (CTAF) 350.35	GND CON 121.9 269.525	CLNC DEL 120.35	UNICOM 122.95
-----------------------	--	--	---------------------------------	---------------------------	-------------------------



ELEV 629 TDZE 615

TDZ/CL Rwys 18R and 36L

HIRL Rwys 18L-36R and 18R-36L



CATEGORY	A	B	C	D	E
LPV DA		815/18	200 (200-½)		
LNAV/VNAV DA		909/24	294 (300-½)		
LNAV MDA	980/24	365 (400-½)	980/35	365 (400-¾)	
CIRCLING	1160-1	531 (600-1)	1160-1½ 531 (600-1½)	1240-2 611 (700-2)	1260-2½ 631 (700-2½)

SE-4, 17 JUN 2021 to 15 JUL 2021

SE-4, 17 JUN 2021 to 15 JUL 2021