

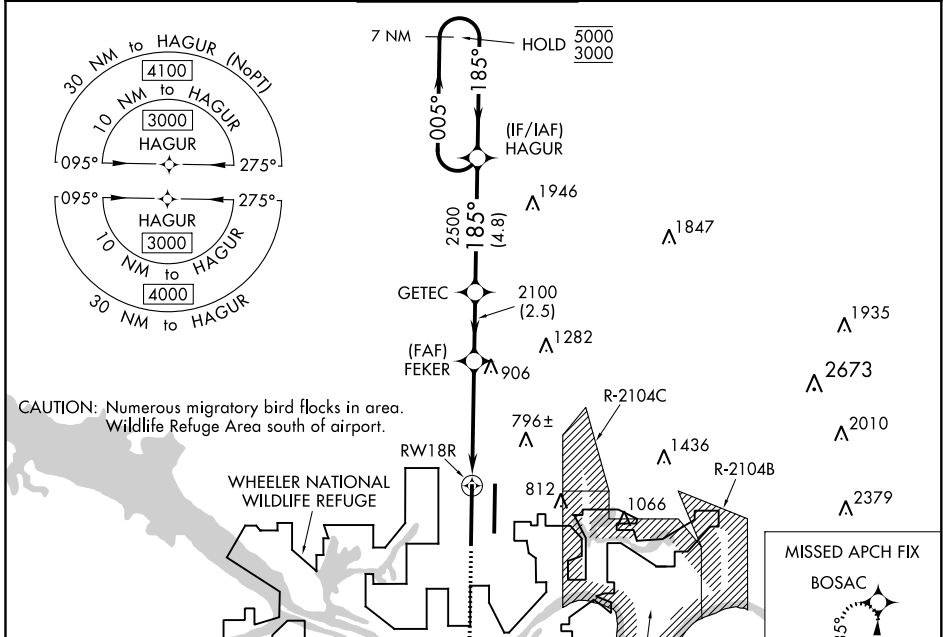
WAAS CH 58206 W18B	APP CRS 185°	Rwy Idg 12600 TDZE 629 Apt Elev 629
--	------------------------	--

RNAV (GPS) RWY 18R

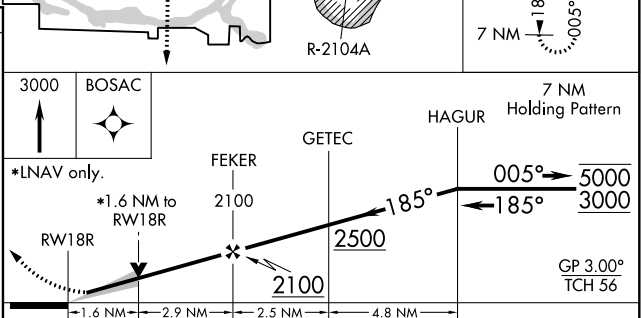
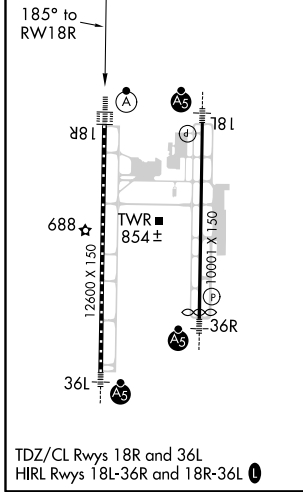
HUNTSVILLE INTL-CARL T JONES FLD (HSV)

RNP APCH	ALSF-2	MISSED APPROACH: Climb to 3000 direct BOSAC and hold.
⚠ For uncompensated Baro-VNAV systems, LNAV/VNAV NA below -10 °C or above 54°C. ⚠ Circling NA for Cats C/D/E east of Rwy 18L-36R. For inop ALS, increase LPV Cat E visibility ASR to RVR 4000, LNAV/VNAV Cat E visibility to 1½ SM, and LNAV Cat C/D/E visibility to 1½ SM.		

ATIS 121.25	HUNTSVILLE APP CON ★ 125.6 354.1	HUNTSVILLE TOWER ★ 127.6 (CTAF) 350.35	GND CON 121.9 269.525	CLNC DEL 120.35	UNICOM 122.95
-----------------------	--	--	---------------------------------	---------------------------	-------------------------



ELEV 629	D TDZE 629
-----------------	--------------------------



CATEGORY	A	B	C	D	E
LPV DA	829/18		200 (200-½)		
LNAV/VNAV DA	1071/45		442 (500-¾)		
LNAV MDA	1200/24	571 (600-½)	1200-1¼	571 (600-1¼)	
C CIRCLING	1200-1	571 (600-1)	1200-1½ 571 (600-1½)	1240-2 611 (700-2)	1260-2¼ 631 (700-2¼)

SE-4, 17 JUN 2021 to 15 JUL 2021

SE-4, 17 JUN 2021 to 15 JUL 2021