

WAAS CH <b>72906</b> <b>W18A</b>	APP CRS <b>185°</b>	Rwy Idg TDZE Apt Elev	<b>9801</b> <b>609</b> <b>629</b>
--	------------------------	-----------------------------	---

# RNAV (GPS) RWY 18L

HUNTSVILLE INTL-CARL T JONES FLD (HSV)

**RNP APCH.**

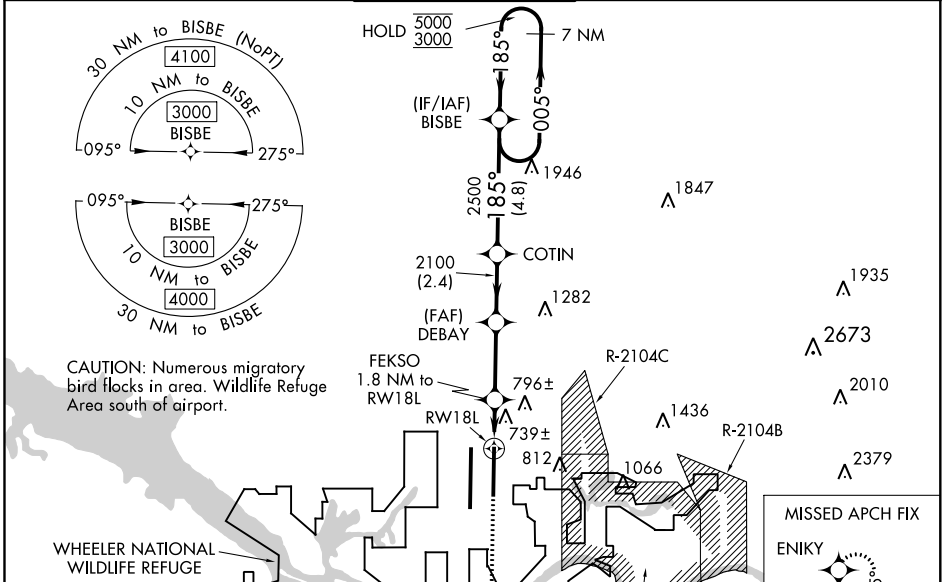
▼ For uncompensated Baro-VNAV systems, LNAV/VNAV NA below -10°C or above 54°C.  
 ▲ Circling NA for Cats C/D/E east of Rwy 18L-36R. For inop ALS, increase LPV Cat E visibility to RVR 4000, LNAV/VNAV Cat E visibility to 1/4 SM, and LNAV Cat E visibility to RVR 6000. Simultaneous approach authorized. LNAV procedure NA during simultaneous operations. Use of FD or AP required during simultaneous operations.  
 \*\* RVR 1800 authorized with use of FD or AP or HUD to DA.

ASR

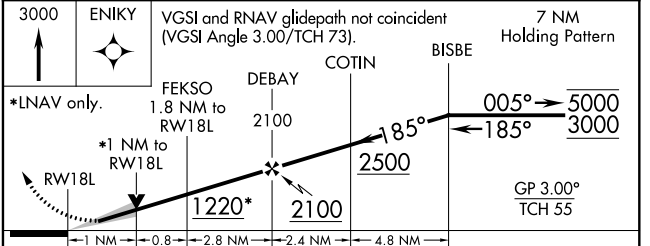
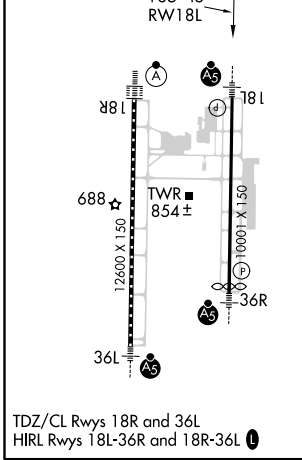
MALSR

MISSED APPROACH:  
Climb to 3000 direct ENIKY and hold.

ATIS <b>121.25</b>	HUNTSVILLE APP CON * <b>125.6 354.1</b>	HUNTSVILLE TOWER * <b>127.6 (CTAF) 350.35</b>	GND CON <b>121.9 269.525</b>	CLNC DEL <b>120.35</b>	UNICOM <b>122.95</b>
-----------------------	--	--	---------------------------------	---------------------------	-------------------------



ELEV 629	<b>D</b>	TDZE 609
----------	----------	----------



CATEGORY	A	B	C	D	E
LPV DA**	809/24		200 (200-½)		
LNAV/VNAV DA	1039/40		430 (500-¾)		
LNAV MDA	1000/24 391 (400-½)		1000/35 391 (400-¾)		
<b>C</b> CIRCLING	1160-1 531 (600-1)	1160-1½ 531 (600-1½)	1240-2 611 (700-2)	1260-2¼ 631 (700-2¼)	

SE-4, 17 JUN 2021 to 15 JUL 2021

SE-4, 17 JUN 2021 to 15 JUL 2021