


LOC/DME I-JJC <b>109.55</b> Chan <b>32</b> (Y)	APP CRS <b>005°</b>	Rwy Idg <b>9801</b> TDZE <b>595</b> Apt Elev <b>629</b>
--	------------------------	---

# ILS or LOC RWY 36R

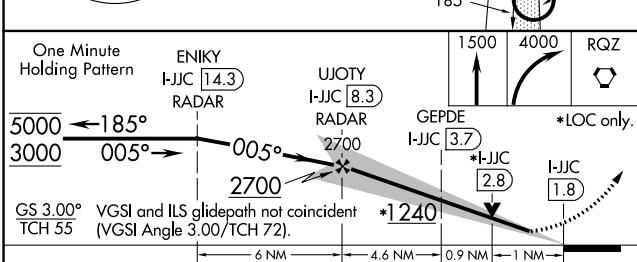
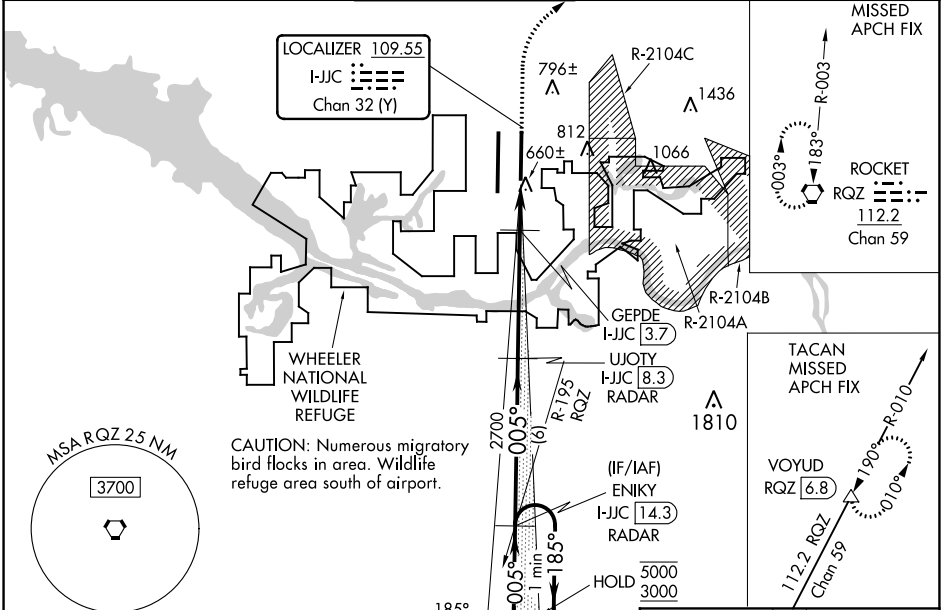
HUNTSVILLE INTL-CARL T JONES FLD (HSV)

RADAR required for procedure entry. DME or RADAR required for LOC only.

**▼** Simultaneous approach authorized. For inop ALS, increase S-ILS 36R Cat E visibility to RVR 4000 and S-LOC 36R Cat E to 1 $\frac{1}{8}$  SM.  
**▲** GEPDE FIX MINIMUMS: Increase S-LOC 36R Cat E visibility to RVR 6000. Circling NA for Cat C/D/E east of Rwy 18L-36R.

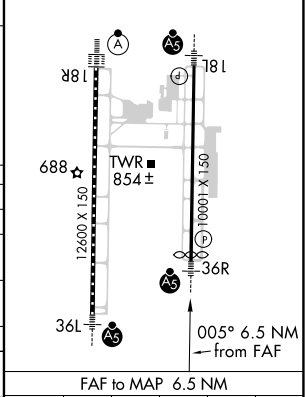
MALSRR  
 MISSED APPROACH: Climb to 1500 then climbing right turn to 4000 direct RQZ VORTAC and hold. (TACAN aircraft climb to 5000 on RQZ VORTAC R-010 to VOYUD/RQZ 6.8 DME and hold north, left turn, 190° inbound).

ATIS <b>121.25</b>	HUNTSVILLE APP CON * <b>125.6 354.1</b>	HUNTSVILLE TOWER * <b>127.6</b> (CTAF) <b>350.35</b>	GND CON <b>121.9 269.525</b>	CLNC DEL <b>120.35</b>	UNICOM <b>122.95</b>
-----------------------	--	---	---------------------------------	---------------------------	-------------------------



ELEV 629	TDZE 595
----------	----------

TDZ/CL Rwys 18R and 36L  
 HIRL Rwys 18L-36R and 18R-36L



CATEGORY	A	B	C	D	E
S-ILS 36R	818/24 223 (200- $\frac{1}{2}$ )				
S-LOC 36R	1240/24	645 (700- $\frac{1}{2}$ )	1240-1 $\frac{3}{8}$		645 (700-1 $\frac{3}{8}$ )
<b>C</b> CIRCLING	1240-1	611 (700-1)	1240-1 $\frac{7}{8}$	1240-2	1260-2 $\frac{1}{4}$
GEPDE FIX MINIMUMS					
S-LOC 36R	980/24	385 (400- $\frac{1}{2}$ )	980/35	385 (400- $\frac{5}{8}$ )	
<b>C</b> CIRCLING	1160-1	531 (600-1)	1160-1 $\frac{1}{2}$	1240-2	1260-2 $\frac{1}{4}$

FAF to MAP 6.5 NM					
Knots	60	90	120	150	180
Min:Sec	6:30	4:20	3:15	2:36	2:10

SE-4, 17 JUN 2021 to 15 JUL 2021

SE-4, 17 JUN 2021 to 15 JUL 2021