

(JHAUN.JHAUN1) 16259

JHAUN ONE ARRIVAL (RNAV)

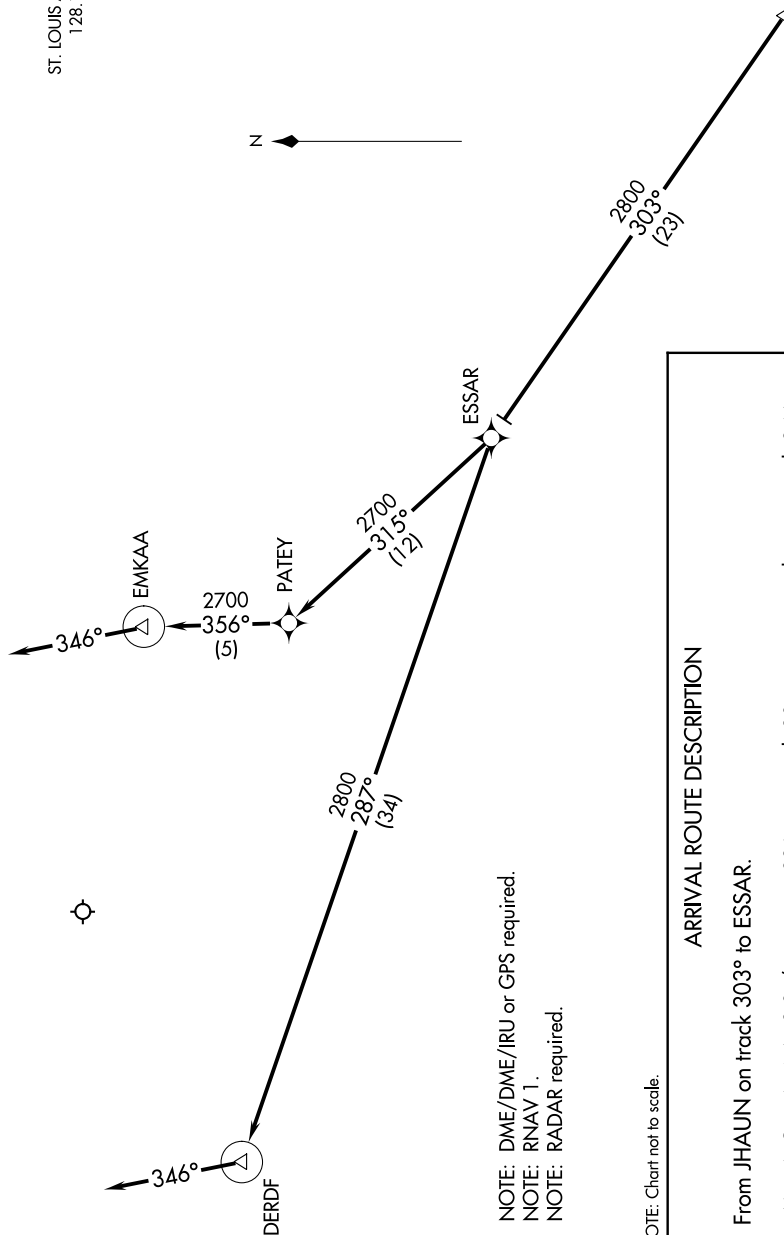
AL-5400 (FAA)

SPIRIT OF ST LOUIS (STUS)
ST. LOUIS, MISSOURI

ATIS
134.8
ST. LOUIS APP CON
128.1 307.05



JHAUN
VERTICAL NAVIGATION
PLANNING INFORMATION
Expect 12000



NOTE: DME/DME/IRU or GPS required.
NOTE: RNAV 1.
NOTE: RADAR required.

NOTE: Chart not to scale.

ARRIVAL ROUTE DESCRIPTION

From JHAUN on track 303° to ESSAR.

LANDING RUNWAYS 8L/R: From ESSAR on track 287° to DERDF, then on track 346°, expect RADAR vectors prior to DERDF.

LANDING RUNWAYS 26L/R: From ESSAR on track 315° to PATEY, then on track 356° to EMKAA, then on track 346°, expect RADAR vector prior to EMKAA.

NC-3, 17 JUN 2021 to 15 JUL 2021

JHAUN ONE ARRIVAL (RNAV)

(JHAUN.JHAUN1) 15NOV12

ST. LOUIS, MISSOURI
SPIRIT OF ST LOUIS (STUS)

1202 JUN to 1202 JUN 2021 to 15 JUL 2021