

WAAS CH <b>93615</b> <b>W27B</b>	APP CRS <b>273°</b>	Rwy Idg TDZE Apt Elev	<b>5003</b> <b>8</b> <b>8</b>
--	------------------------	-----------------------------	-------------------------------------

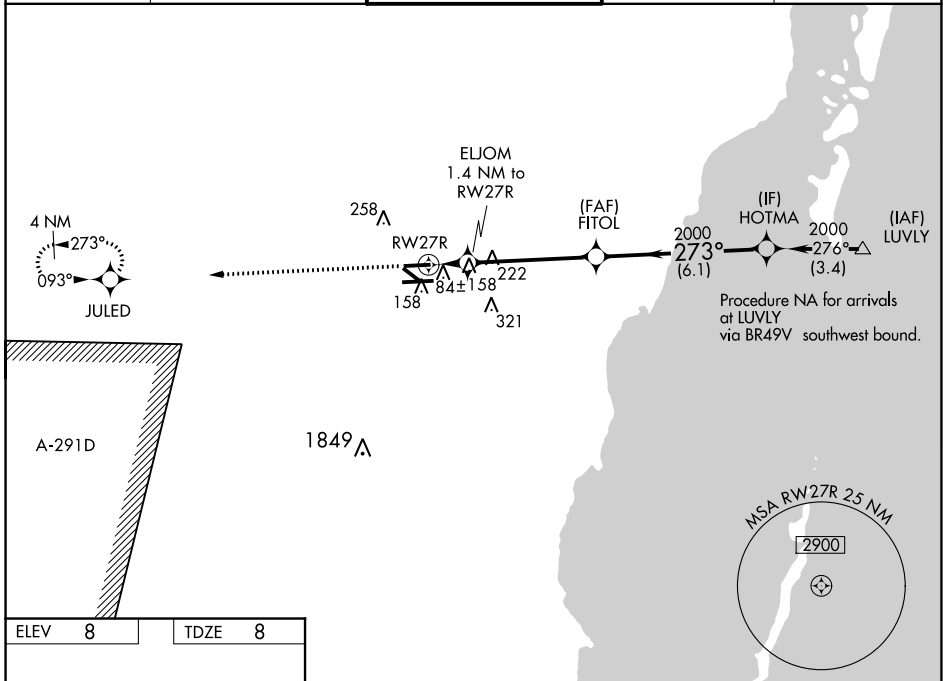
# RNAV (GPS) RWY 27R

MIAMI EXEC (TMB)

▼ For uncompensated Baro-VNAV systems, LNAV/VNAV NA below -1.5°C (5°F) or above 49°C (120°F). DME/DME RNP-0.3 NA. When local altimeter setting not received, use Miami Intl altimeter setting and adjust all DA 27 feet and all MDA 40 feet; increase LPV all Cats visibility ¼ mile, LNAV Cat D visibility ¼ mile, and Circling Cat D visibility ¼ mile. Baro-VNAV NA when using Miami Intl altimeter setting. Circling to Rwy 13, 31 NA at night.

▲ MISSED APPROACH: Climb to 2000 direct JULED and hold.

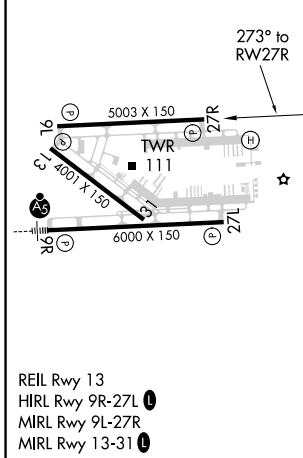
ATIS <b>124.0</b>	MIAMI APP CON <b>125.5 354.1</b>	TAMIAMI TOWER ★ <b>118.9 (CTAF) 0</b>	GND CON <b>121.7</b>	CLNC DEL <b>133.0</b>
----------------------	-------------------------------------	--	-------------------------	--------------------------



SE-3, 17 JUN 2021 to 15 JUL 2021

SE-3, 17 JUN 2021 to 15 JUL 2021

ELEV 8	TDZE 8
--------	--------



CATEGORY	A	B	C	D
LPV DA	258- <sup>3</sup> / <sub>4</sub>		250 (300- <sup>3</sup> / <sub>4</sub> )	
LNAV/VNAV DA	352-1 <sup>1</sup> / <sub>4</sub>		344 (400-1 <sup>1</sup> / <sub>4</sub> )	
LNAV MDA	420-1	412 (500-1)	420-1 <sup>1</sup> / <sub>4</sub>	412 (500-1 <sup>1</sup> / <sub>4</sub> )
CIRCLING	460-1	452 (500-1)	460-1 <sup>1</sup> / <sub>2</sub> 452 (500-1 <sup>1</sup> / <sub>2</sub> )	640-2 632 (700-2)

2000  
FITOL  
HOTMA  
Procedure Turn NA  
GP 3.00°  
TCH 50

500\*  
273°  
2000

1.4 NM  
4.6 NM  
6.1 NM