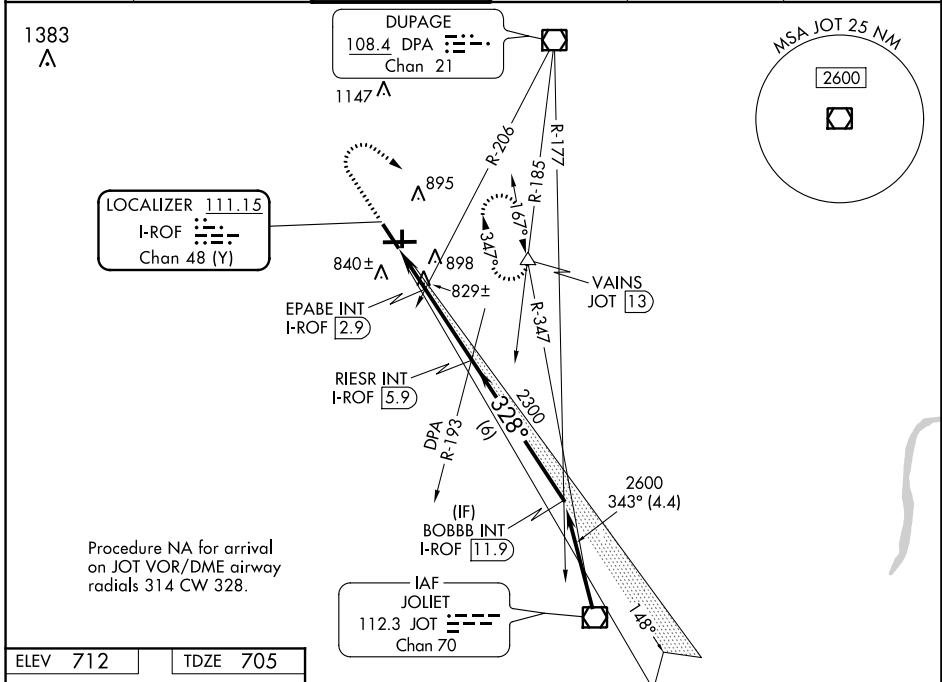


LOC/DME I-ROF <b>111.15</b> Chan 48 (Y)	APP CRS <b>328°</b>	Rwy Ldg TDZE <b>5503</b> <b>705</b> Apt Elev <b>712</b>
---	------------------------	--

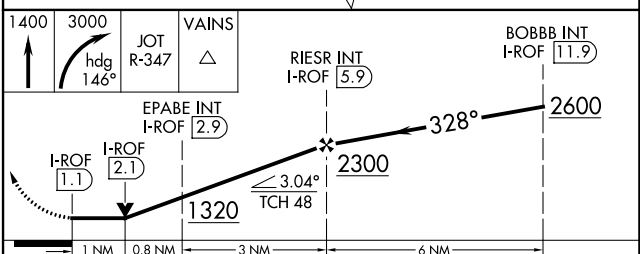
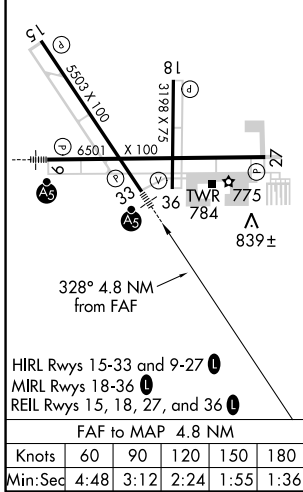
# LOC RWY 33

AURORA MUNI (ARR)

<p><b>▽</b> For inop ALS, increase S-LOC 33 Cats C and D visibility to 1 3/4 SM and EPABE FIX minimums S-LOC 33 Cats C and D visibility to 1 SM.</p>	<p><b>MALSR</b> </p> <p>MISSED APPROACH: Climb to 1400 then climbing right turn to 3000 on heading 146° and JOT VOR/DME R-347 to VAINS INT/JOT 13 DME and hold, continue climb-in-hold to 3000.</p>				
<p><b>ATIS</b> <b>125.85</b></p>	<p><b>CHICAGO APP CON</b> <b>133.5 349.0</b></p>	<p><b>AURORA TOWER*</b> <b>120.6 (CTAF)</b> </p>	<p><b>GND CON</b> <b>121.7</b></p>	<p><b>CLNC DEL</b> <b>121.7</b> (When tower closed)</p>	<p><b>UNICOM</b> <b>122.95 123.5</b></p>



ELEV 712	TDZE 705
----------	----------



CATEGORY	A	B	C	D
S-LOC 33	1320-1/2	615 (700-1/2)	1320-1 3/8	615 (700-1 3/8)
<b>C</b> CIRCLING	1320-1	608 (700-1)	1320-1 3/4	1320-2
EPABE FIX MINIMUMS (DUAL VOR RECEIVERS or DME REQUIRED)				
S-LOC 33	1080-1/2	375 (400-1/2)	1080-5/8	375 (400-5/8)
<b>C</b> CIRCLING	1200-1	488 (500-1)	1200-1 1/2	1320-2
			488 (500-1 1/2)	608 (700-2)

EC-3, 17 JUN 2021 to 15 JUL 2021

EC-3, 17 JUN 2021 to 15 JUL 2021