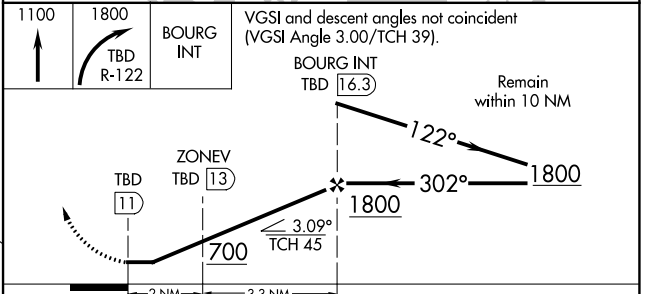
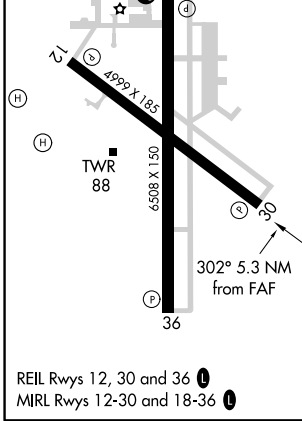
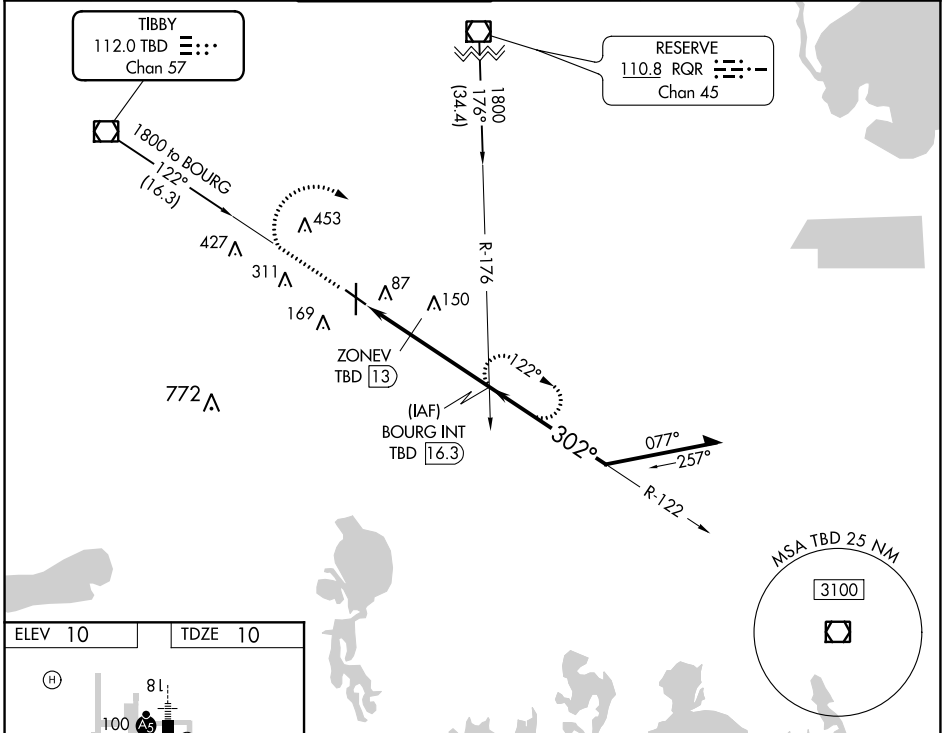


VOR/DME TBD <b>112.0</b> Chan <b>57</b>	APP CRS <b>302°</b>	Rwy Idg <b>4999</b> TDZE <b>10</b> Apt Elev <b>10</b>
---	------------------------	---

# VOR/DME RWY 30

## HOUMA-TERREBONNE (HUM)

<b>▽</b> Visibility reduction by helicopters NA. <b>▲</b> When local altimeter setting not received, use Louis Armstrong New Orleans Intl altimeter setting and increase all MDA 80 feet, increase S-30 Cat C/D and Circling Cat D visibility ¼ mile.	MISSED APPROACH: Climb to 1100 then climbing right turn to 1800 via TBD VOR/DME R-122 to BOURG INT/TBD 16.3 DME and hold.				
ATIS <b>120.25</b>	NEW ORLEANS APP CON <b>118.9 350.35</b>	HOUMA TOWER ★ <b>125.3 (CTAF) 346.3</b>	GND CON <b>123.875</b>	CLNC DEL <b>118.9</b> (When twr closed)	UNICOM <b>122.95</b>



CATEGORY	A	B	C	D
S-30	400-1	390 (400-1)		400-1¼ 390 (400-1¼)
CIRCLING	480-1	470 (500-1)	480-1½ 470 (500-1½)	620-2 610 (700-2)

SC-4, 17 JUN 2021 to 15 JUL 2021

SC-4, 17 JUN 2021 to 15 JUL 2021