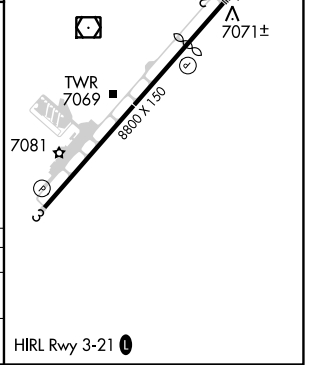
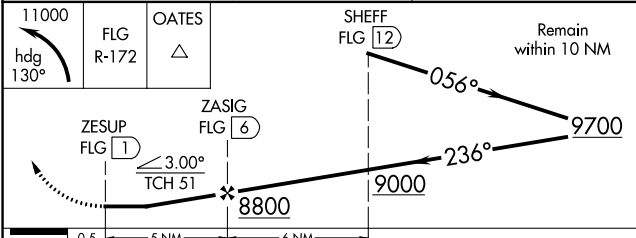
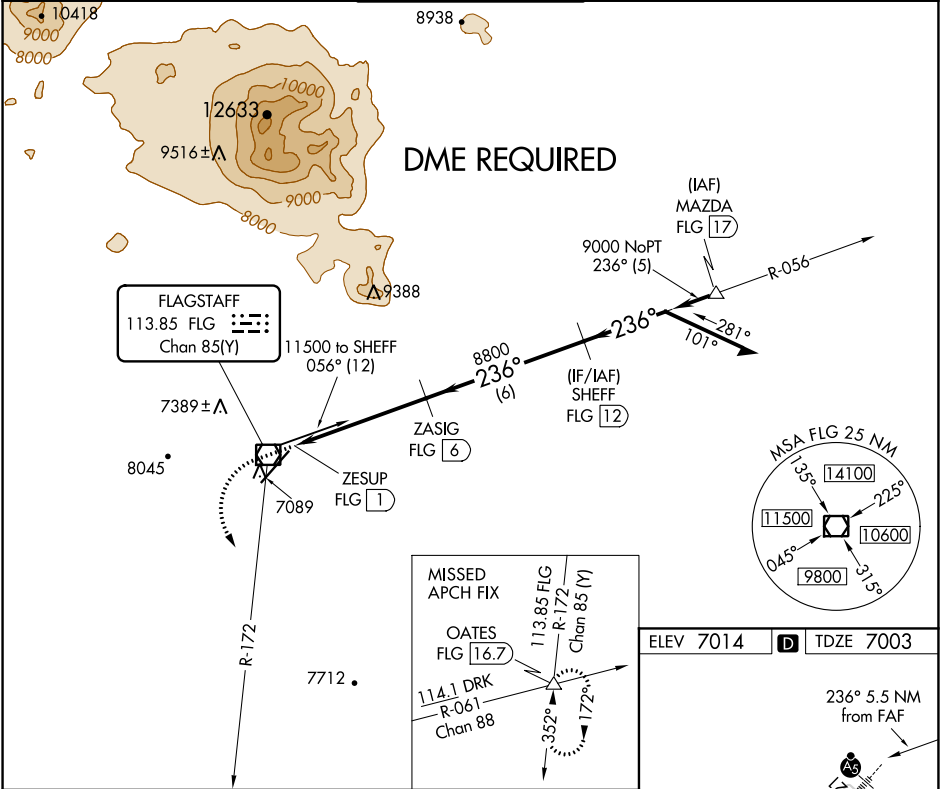


VOR/DME FLG 113.85 Chan 85(Y)	APP CRS 236°	Rwy Idg 7000 TDZE 7003 Apt Elev 7014
---	------------------------	---

VOR RWY 21

FLAGSTAFF PULLIAM (FLG)

Rwy 21 helicopter visibility reduction below 1 SM NA. DME required. Inop table does not apply to S-21 Cats A/B. Night landing: Rwy 21, operational VGSI required, remain on or above VGSI glidepath until threshold.	MALSR	MISSED APPROACH: Climbing left turn to 11000 on heading 130° and FLG R-172 to OATES INT/16.7 DME, continue climb-in-hold.		
		ATIS 125.8	PHOENIX APP CON 126.375 236.775	FLAGSTAFF TOWER ★ 134.55 (CTAF) 239.25



CATEGORY S-21	A	B	C	D
CIRCLING	7520-1 506 (600-1)	7560-1 546 (600-1)	8100-3 1086 (1100-3)	8560-3 1546 (1600-3)

FLAGSTAFF PULLIAM (FLG)
VOR RWY 21

SW-4, 17 JUN 2021 to 15 JUL 2021

SW-4, 17 JUN 2021 to 15 JUL 2021