

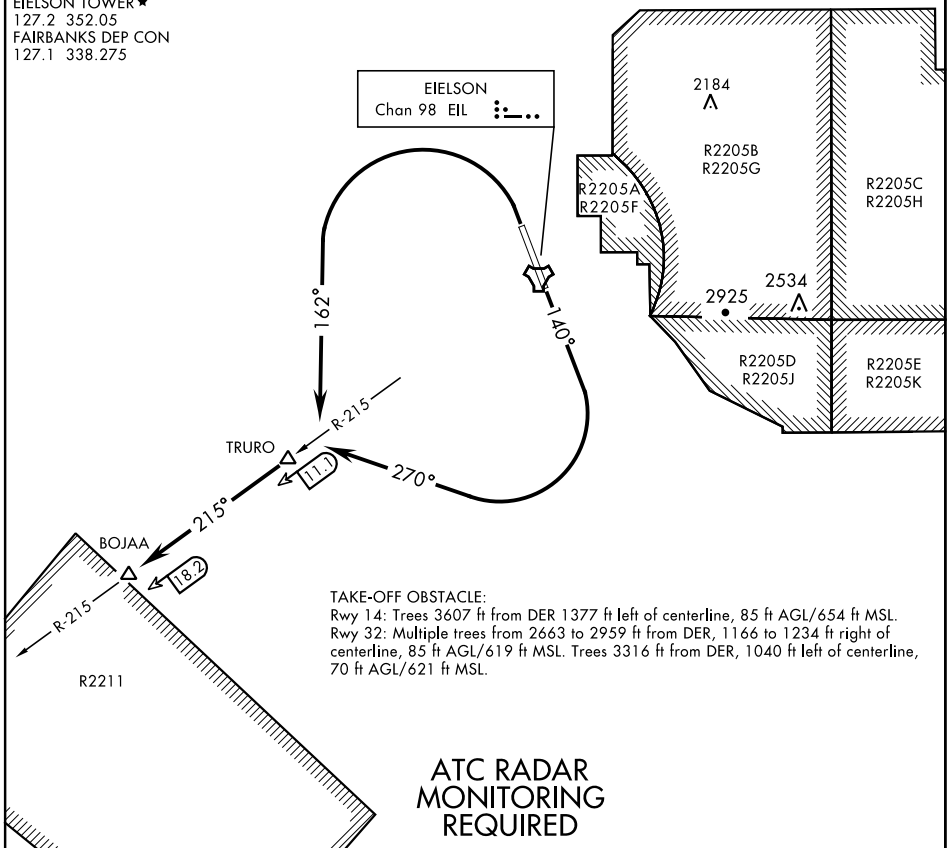
BOJAA TWO DEPARTURE (BOJAA2•BOJAA)

EIELSON AFB (PAEI)

FAIRBANKS, ALASKA

ATIS ★ 119.9 273.5
 CLNC DEL 343.7
 GND CON 121.8 275.8
 EIELSON TOWER ★ 127.2 352.05
 FAIRBANKS DEP CON 127.1 338.275

SL-1729 [USAF]



TAKE-OFF OBSTACLE:

Rwy 14: Trees 3607 ft from DER 1377 ft left of centerline, 85 ft AGL/654 ft MSL.
 Rwy 32: Multiple trees from 2663 to 2959 ft from DER, 1166 to 1234 ft right of centerline, 85 ft AGL/619 ft MSL. Trees 3316 ft from DER, 1040 ft left of centerline, 70 ft AGL/621 ft MSL.

ATC RADAR MONITORING REQUIRED

DEPARTURE ROUTE DESCRIPTION

TAKE-OFF RWY 14: Climb heading 140° to 1100, then climbing right turn to heading 270°, intercept EIL TACAN R-215 outbound to BOJAA. Climb and maintain 3700 or assigned altitude.

TAKE-OFF RWY 32: Climbing left turn to heading 162° to TRURO then continue outbound on EIL TACAN R-215 to BOJAA. Maintain at or above 3700 or assigned altitude.

BOJAA TWO DEPARTURE (BOJAA2•BOJAA)

Orig 26MAR20

FAIRBANKS, ALASKA
EIELSON AFB (PAEI)

AK, 17 JUN 2021 to 12 AUG 2021

AK, 17 JUN 2021 to 12 AUG 2021