

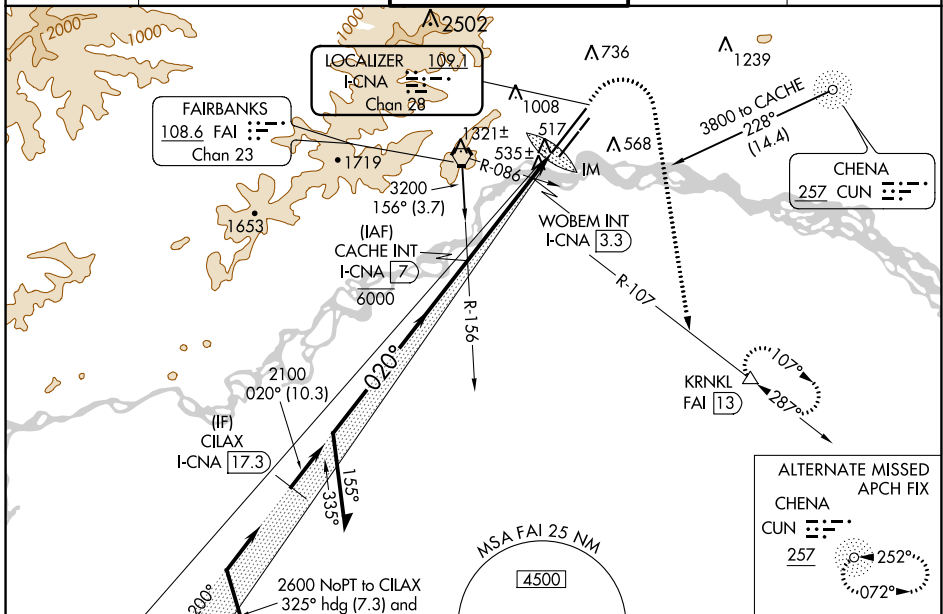
LOC/DME I-CNA	APP CRS	Rwy Idg	<b>11050</b>
<b>109.1</b>	<b>020°</b>	TDZE	<b>439</b>
Chan <b>28</b>		Apt Elev	<b>439</b>

# ILS or LOC RWY 2L

FAIRBANKS INTL (FAI) (PAFA)

DME Required.	ALSIF-2	MISSED APPROACH: Climb to 900 then climbing right turn to 5000 on heading 170° and FAI VORTAC R-107 to KRNL/FAI 13 DME and hold, continue climb-in-hold to 5000.
<p>▼ Circling NA west of Rwy 2L-20R. Circling NA to Rwys 2W and 20W. For inop ALS, increase S-ILS 2L Cat E visibility to RVR 4000 and S-LOC 2L Cat C/D/E visibility to RVR 5500.</p> <p>⚠ -32°C</p>		

ATIS	FAIRBANKS APP CON	FAIRBANKS TOWER	GND CON	CLNC DEL
<b>124.4</b>	<b>125.35 363.2</b>	<b>118.3 257.8</b>	<b>121.9</b>	<b>127.6</b>

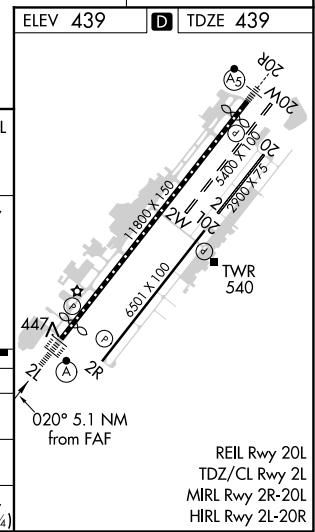
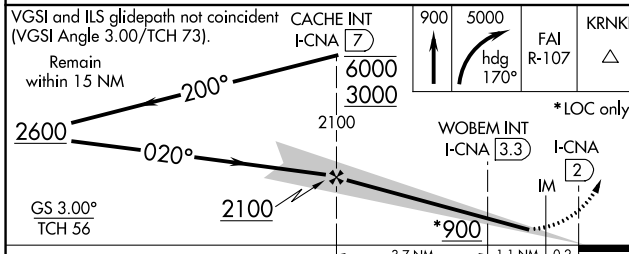


ALTERNATE MISSED APCH FIX

CHENA  
CUN 257

252°  
072°

ELEV 439	<b>D</b> TDZE 439
----------	-------------------



CATEGORY	A	B	C	D	E
S-ILS 2L	639/18 200 (200-½)				
S-LOC 2L	800/24	361 (400-½)	800/35 361 (400-¾)		
<b>C</b> CIRCLING	880-1 441 (500-1)	900-1 461 (500-1)	900-1½ 461 (500-1½)	1020-2 581 (600-2)	1060-2¼ 621 (700-2¼)

AK, 17 JUN 2021 to 12 AUG 2021

AK, 17 JUN 2021 to 12 AUG 2021