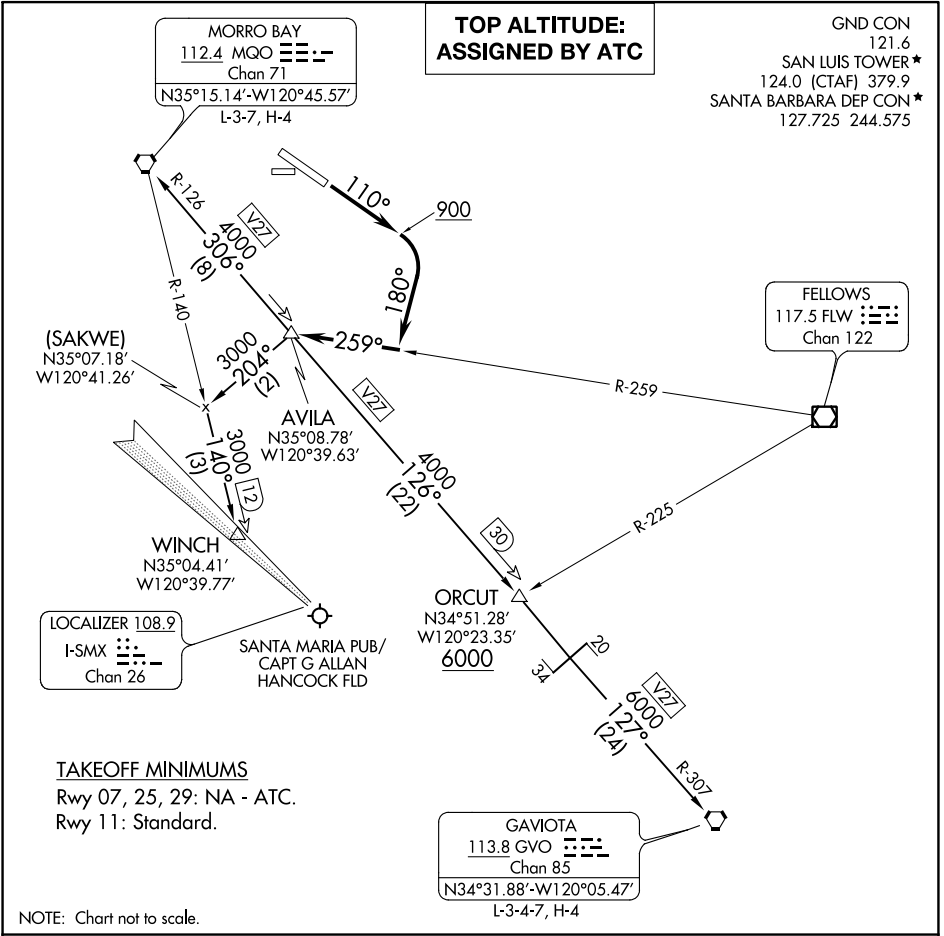


# AVILA FOUR DEPARTURE

AL-989 (FAA)

SAN LUIS COUNTY RGNL (SBP)  
SAN LUIS OBISPO, CALIFORNIA



SW-3, 17 JUN 2021 to 15 JUL 2021

SW-3, 17 JUN 2021 to 15 JUL 2021

NOTE: Chart not to scale.

**DEPARTURE ROUTE DESCRIPTION**

**TAKEOFF RUNWAY 11:** Climb on heading 110° to 900, then climbing right turn heading 180° to intercept the FLW VOR/DME R-259 to AVILA INT, then on assigned transition or assigned route. Maintain ATC assigned altitude.

**GAVIOTA TRANSITION (AVILA4.GVO):** From over AVILA on MQO R-126 to ORCUT, then on MQO R-126 and GVO R-307 to GVO VORTAC.

**MORRO BAY TRANSITION (AVILA4.MQO):** From over AVILA on MQO R-126 to MQO VORTAC.

**WINCH TRANSITION (AVILA4.WINCH):** From over AVILA on heading 204° to SAKWE, then on MQO R-140 to WINCH.