

# RNAV (GPS) RWY 32L/R

APCH CRS 325°		32L	32R
	Rwy Idg	8000	8001
	TDZE	22	21
	Arpt Elev	22	

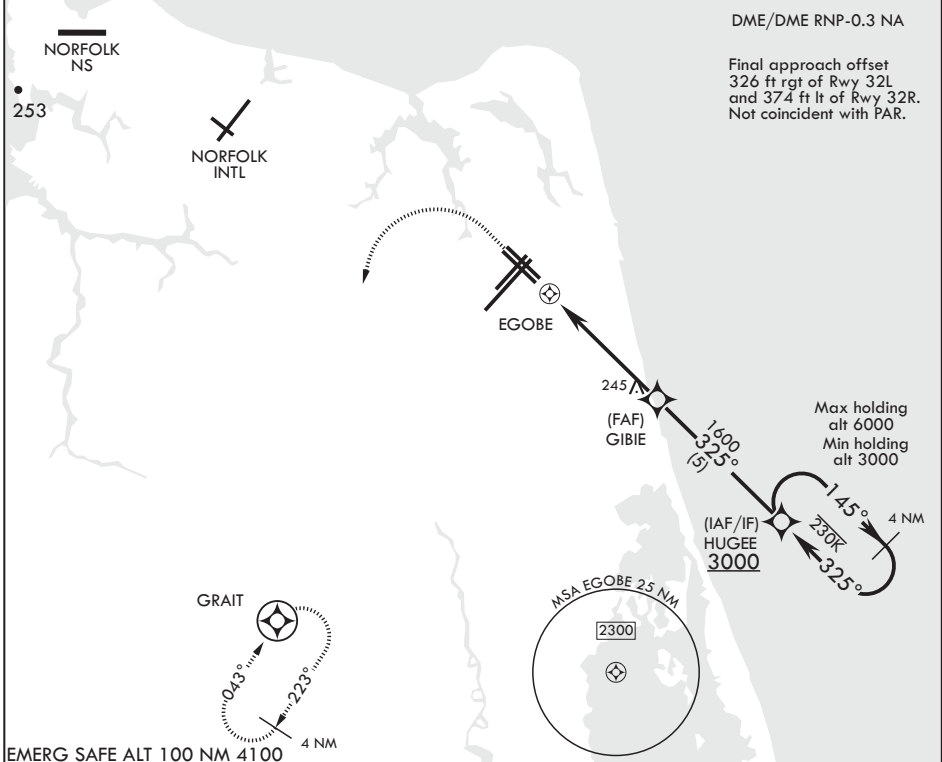
AL-934 (USN) OCEANA NAS (APOLLO SOUCEK FLD) (KNTU)

▼ \* When ALS inop increase CAT AB vis to 1 mile, CAT CD vis to 1 1/8 miles.

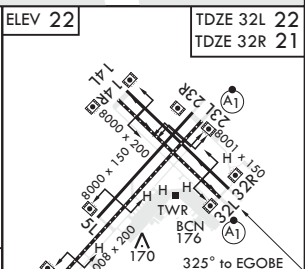
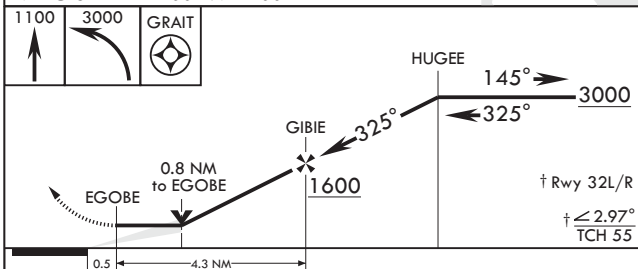
Rwy 32L  
ALSF-1

MISSED APPROACH: Climbing 1100 then climbing left turn to 3000 direct GRAIT and hold.

ATIS 317.6	OCEANA APP CON 123.9 266.8	TOWER 127.075 360.2	GND CON 119.6 336.4	CLNC DEL 254.4	ASR/PAR
---------------	-------------------------------	------------------------	------------------------	-------------------	---------



EMERG SAFE ALT 100 NM 4100



CATEGORY	A	B	C	D
LNAV MDA	480-1	459 (500-1)	480-1 3/8	459 (500-1 3/8)
LNAV MDA*	480-1/2	458 (500-1/2)	480-7/8	458 (500-7/8)
CIRCLING	500-1	478 (500-1)	640-1 3/4 618 (700-1 3/4)	640-2 618 (700-2)

ELEV 22	TDZE 32L 22
	TDZE 32R 21

HIRL all Rwys  
Wave-Off Lights all Rwys

# RNAV (GPS) RWY 32L/R

NE-3, 17 JUN 2021 to 15 JUL 2021

NE-3, 17 JUN 2021 to 15 JUL 2021