

VIRGINIA BEACH, VIRGINIA

RNAV (GPS) RWY 23L

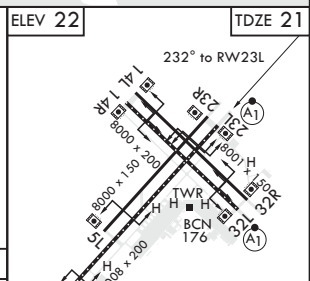
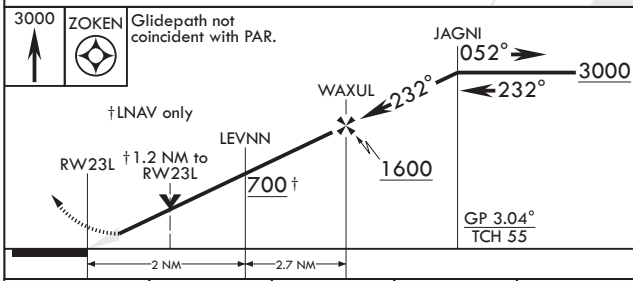
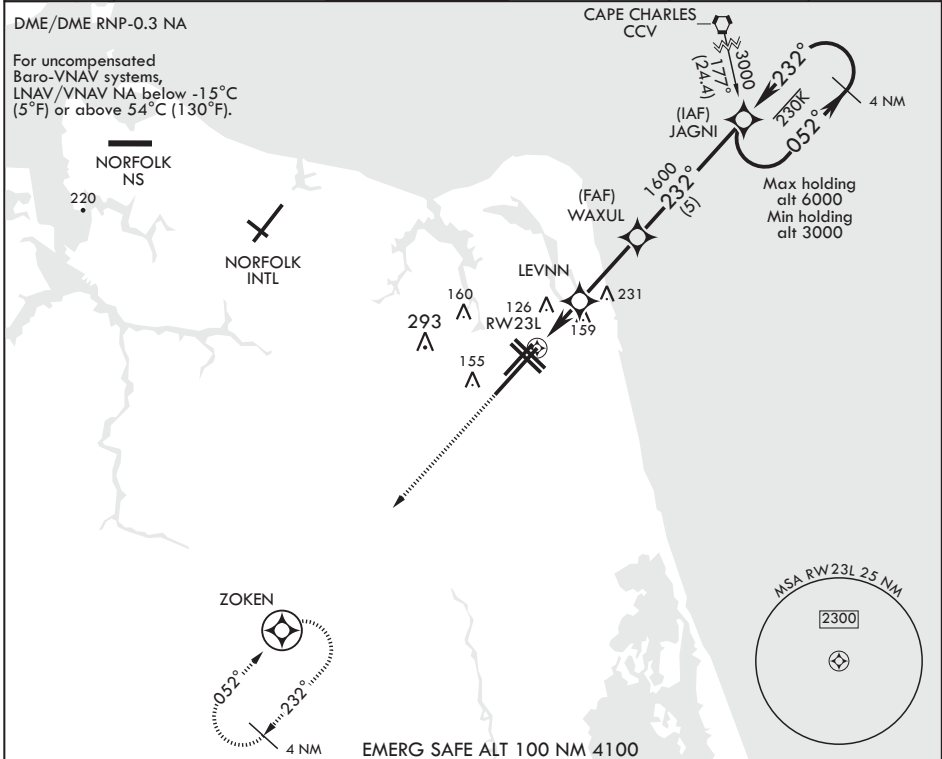
WAAS CH 67300 W23A	APCH CRS 232°	Rwy ldg TDZE Arprt Elev	12,008 21 22
---------------------------------	-------------------------	-------------------------------	---

AL-934 (USN) OCEANA NAS (APOLLO SOUCEK FLD) (KNTU)

⚠ * When ALS inop, increase CAT AB vis to 1 mile, CAT CD vis to 1 1/4 miles.

ALSF-1
MISSED APPROACH: Climb to 3000 direct ZOKEN and hold. Continue climb in hold to 3000.

ATIS 317.6	OCEANA APP CON 123.9 266.8	TOWER 127.075 360.2	GND CON 119.6 336.4	CLNC DEL 254.4	ASR/PAR
----------------------	--------------------------------------	-------------------------------	-------------------------------	--------------------------	---------



CATEGORY	A	B	C	D
LPV DA*	221-1/2	200	(200-1/2)	
LNAV/VNAV DA*	442-7/8	421	(500-7/8)	
LNAV MDA*	460-1/2 439 (500-1/2)	460-3/4 439 (500-3/4)		
C CIRCLING	500-1 478 (500-1)	640-1 3/4 618 (700-1 3/4)	640-2 618 (700-2)	

HIRL all Rws
Wave-Off Lights all Rws

VIRGINIA BEACH, VIRGINIA
Amdt 3 03JAN19

36°49'N - 76°02'W OCEANA NAS (APOLLO SOUCEK FLD) (KNTU)

RNAV (GPS) RWY 23L

NE-3, 17 JUN 2021 to 15 JUL 2021

NE-3, 17 JUN 2021 to 15 JUL 2021