

HI-TACAN RWY 5L

TACAN NTU Chan 113	APCH CRS 043°	Rwy Idg 8000 TDZE 20 Arprt Elev 22
---------------------------	----------------------	---

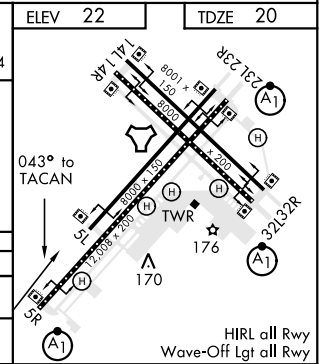
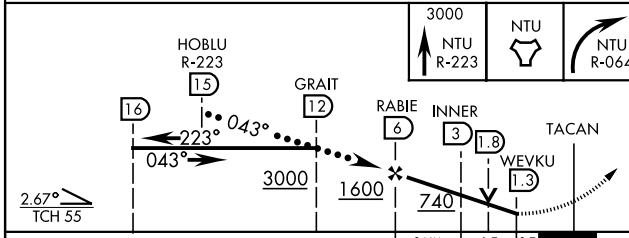
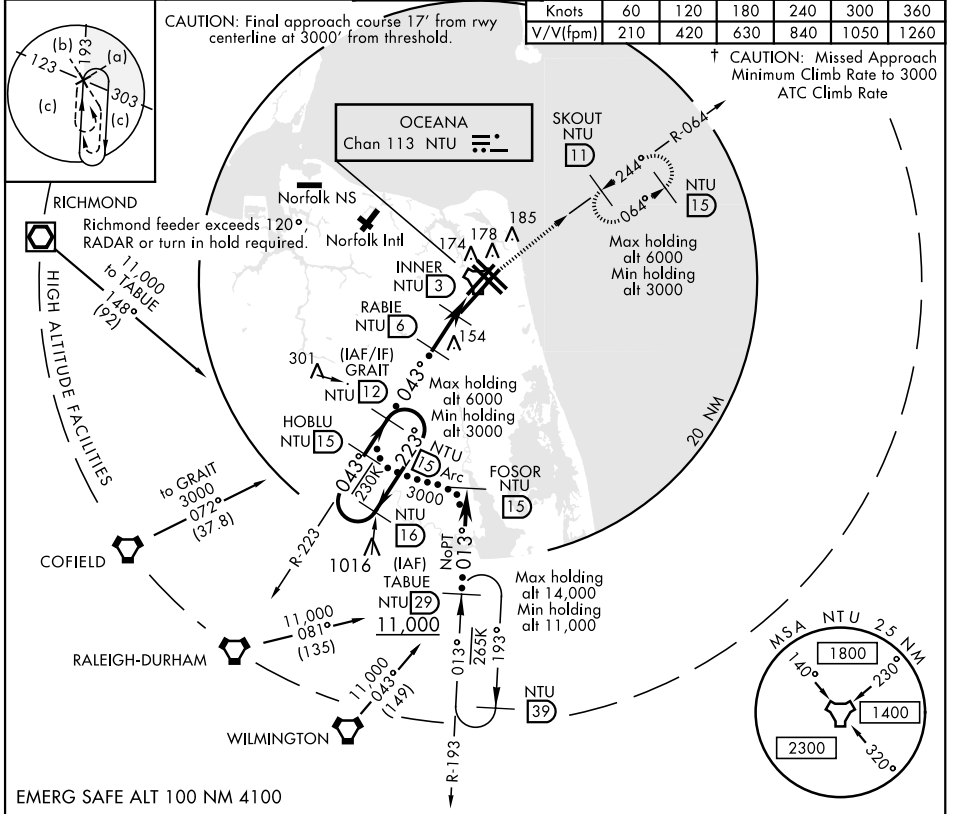
JAL-934 [USN] OCEANA NAS (APOLLO SOUCEK FIELD) (KNTU)

† MISSED APPROACH: Climb to 3000 via R-223 to NTU TACAN and via R-064 to SKOUT and hold.

ATIS 317.6	APP CON 123.9 266.8	OCEANA TOWER 127.075 360.2	GND CON 119.6 336.4	CLNC DEL 254.4	ASR/PAR
-------------------	----------------------------	-----------------------------------	----------------------------	-----------------------	---------

Knots	60	120	180	240	300	360
	V/V(fpm)	210	420	630	840	1050

† CAUTION: Missed Approach Minimum Climb Rate to 3000 ATC Climb Rate



CATEGORY	C	D	E
S-5L	440-1½	420 (500-1½)	
CIRCLING	640-1¾ 618 (700-1¾)	640-2 618 (700-2)	900-3 878 (900-3)

HI-TACAN RWY 5L

NE-3, 17 JUN 2021 to 15 JUL 2021

NE-3, 17 JUN 2021 to 15 JUL 2021