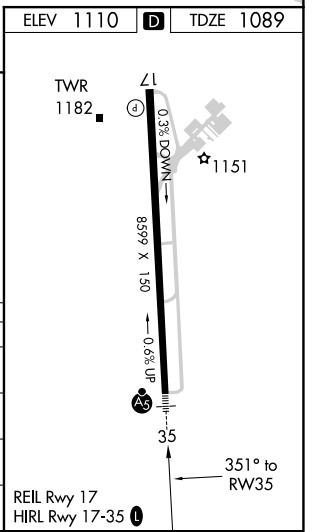
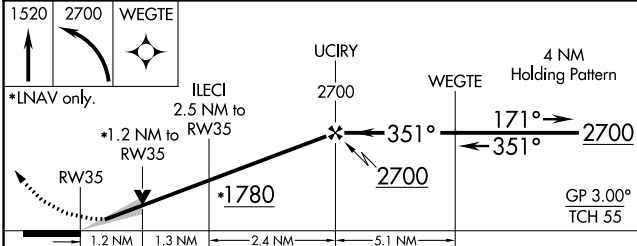
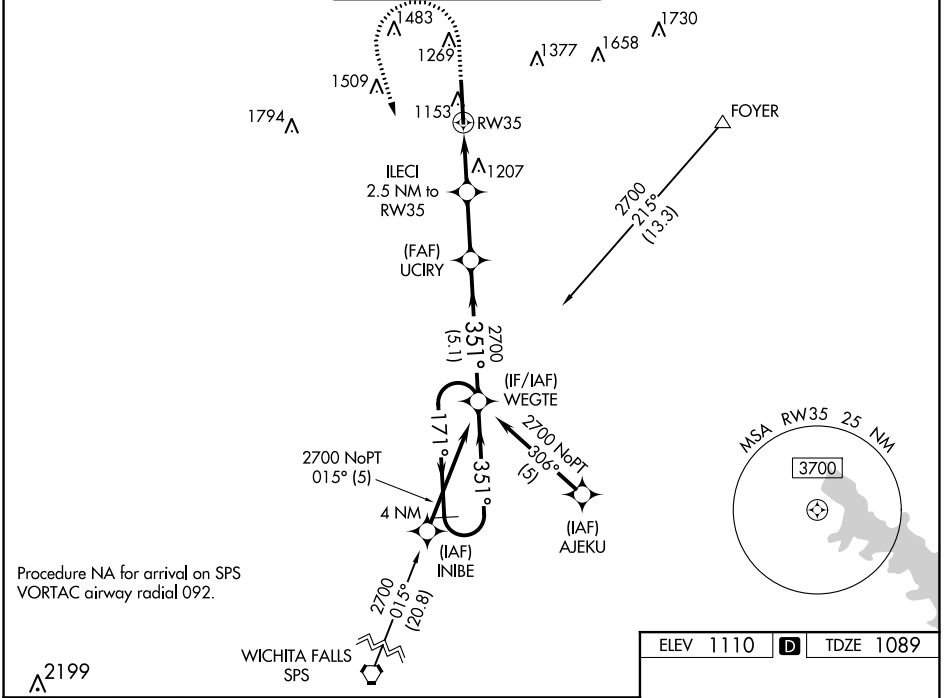


WAAS CH 77640 W35A	APP CRS 351°	Rwy Idg 8599
		TDZE 1089
		Apt Elev 1110

RNAV (GPS) RWY 35

LAWTON-FORT SILL RGNL (LAW)

RNP APCH. ▼ For uncompensated Baro-VNAV systems, LNAV/VNAV NA below -11°C or above 54°C. For inop ALS, increase LNAV/VNAV all ASR Cats visibility to 7/8 SM.		MALSR AS	MISSED APPROACH: (Do not exceed 200K until WEGTE) Climb to 1520 then climbing left turn to 2700 direct WEGTE and hold.	
ATIS 120.75	FORT SILL APP CON 120.55 322.4	LAWTON TOWER * 119.9 (CTAF) 0 257.8	GND CON 121.9	UNICOM 122.95



CATEGORY	A	B	C	D
LPV DA		1289-1/2	200 (200-1/2)	
LNAV/VNAV DA		1376-1/2	287 (300-1/2)	
LNAV MDA	1520-1/2	431 (500-1/2)	1520-3/4	431 (500-3/4)
CIRCLING	1620-1	510 (600-1)	1820-2 710 (800-2)	1820-2 1/4 710 (800-2 1/4)

SC-1, 17 JUN 2021 to 15 JUL 2021

SC-1, 17 JUN 2021 to 15 JUL 2021