

LOC I-CMX 110.3 Chan 40	APP CRS 133°	Rwy Idg TDZE Apt Elev	6500 1095 1095
--------------------------------------	------------------------	-----------------------------	---

LOC BC RWY 13

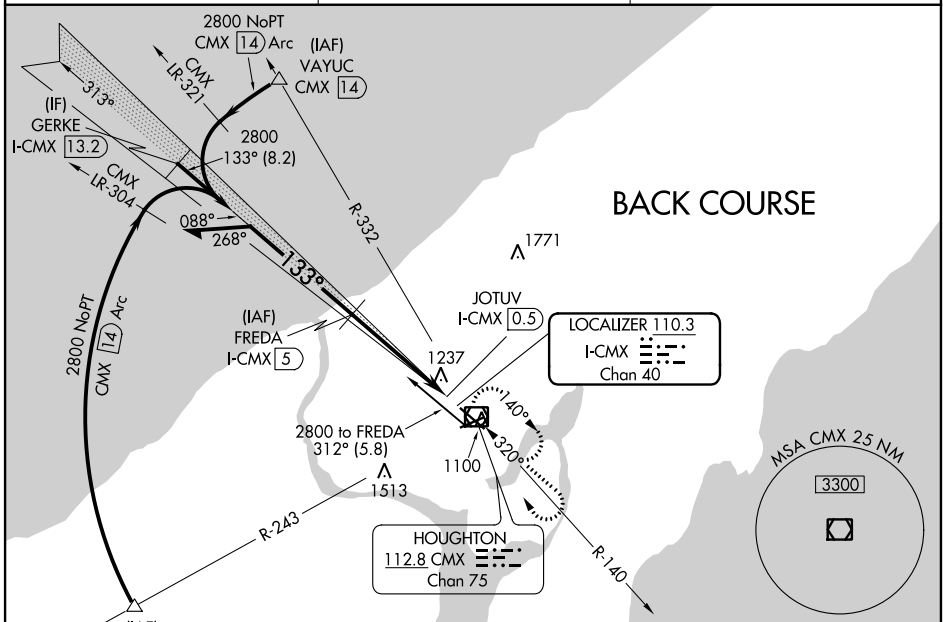
HOUGHTON COUNTY MEML (CMX)

DME required.

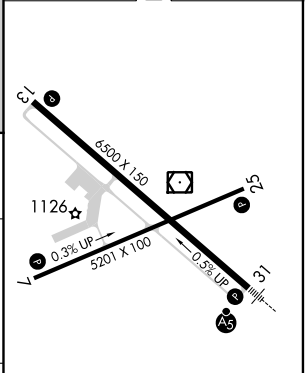
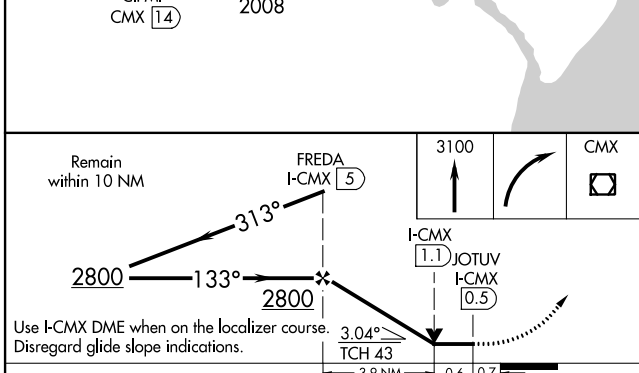
⚠ Rwy 13 helicopter visibility reduction below 3/4 SM NA.
Request MRL Rwy 7-27 - CTAF.

MISSED APPROACH: Climb to 3100 then right turn direct CMX VOR/DME and hold.

ASOS 125.675	MINNEAPOLIS CENTER 133.55 379.1	UNICOM 122.7 (CTAF) 0
------------------------	---	---------------------------------



ELEV 1095	D TDZE 1095
-----------	--------------------



CATEGORY	A	B	C	D
S- LOC 13	1540-1	445 (500-1)	1540-1 1/4 445 (500-1 1/4)	1540-1 1/2 445 (500-1 1/2)
C CIRCLING	1560-1 465 (500-1)	1600-1 505 (600-1)	1680-1 1/2 585 (600-1 1/2)	1820-2 1/4 725 (700-2 1/4)

MRL Rwy 7-25 **0**
REIL Rws 7, 13 and 25 **0**
HIRL Rwy 13-31 **0**

EC-1, 17 JUN 2021 to 15 JUL 2021

EC-1, 17 JUN 2021 to 15 JUL 2021