

APP CRS 020°	Rwy Idg TDZE Apt Elev	9007 2966 2977
------------------------	-----------------------------	---

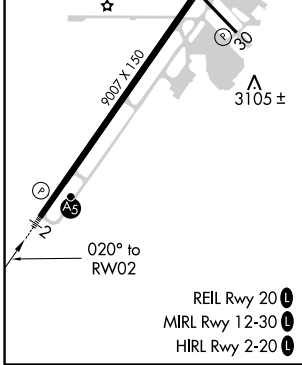
RNAV (RNP) Y RWY 2

GLACIER PARK INTL (GPI)

RF and GPS required. Missed approach requires RNP less than 1.0.
 For uncompensated Baro-VNAV systems, procedure NA below -21°C (-5°F) or above 43°C (109°F). For inoperative MALSRR increase RNP 0.10* visibility to 1¼ and RNP 0.30 visibility to 2.
 *Missed approach requires minimum climb of 220 feet per NM to 6100.

MALSRR
MISSED APPROACH: Climb to 10000 via left turn to JOGAD, and via left turn to TONYUY, and via 121° track to WILTO and via 129° track to ANGLI and hold.

ATIS 132.625	SALT LAKE CENTER 133.4 285.4	GLACIER TOWER ★ 124.55 (CTAF) 0	GND CON 121.6	UNICOM 122.95
------------------------	--	---	-------------------------	-------------------------



Procedure Turn NA	JUNRU	WULEX	AVDIH	10000	JOGAD	ROYOG
GP 3.00° TCH 51	8000	7200	6200	5200	RW02	
	3 NM	3.2 NM	7.1 NM	6.7 NM		
CATEGORY	A	B	C	D		
RNP 0.10 DA*	NA	NA	3340-¾	374 (400-¾)		
RNP 0.30 DA	NA	NA	3522-1½	556 (600-1½)		

AUTHORIZATION REQUIRED

NW-1, 17 JUN 2021 to 15 JUL 2021

NW-1, 17 JUN 2021 to 15 JUL 2021