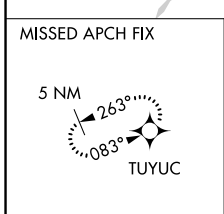
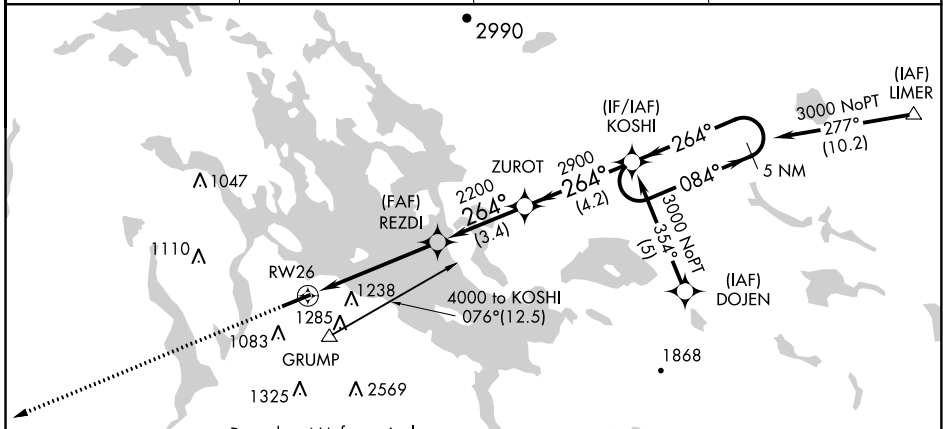


APP CRS 264°	Rwy Idg 5286
	TDZE 533
	Apt Elev 545

RNAV (GPS) RWY 26

LACONIA MUNI (LCI)

RNP APCH - GPS			MISSED APPROACH: Climb to 4400 direct TUYUC and hold, continue climb-in-hold to 4400.
<p>▼ Rwy 26 helicopter visibility reduction below 1 SM NA. If local altimeter setting not received, use Concord altimeter setting and increase all MDAs 80 feet. Circling NA south of Rwy 8-26.</p> <p>▲ Straight-in Rwy 26 NA at night, Circling Rwy 26 NA at night.</p>			
AWOS-3PT 133.525	BOSTON APP CON 134.75 254.25	CLNC DEL 119.85	UNICOM 123.0 (CTAF) 0

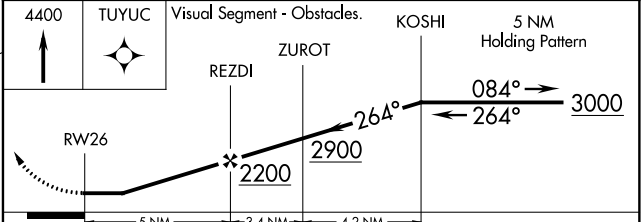
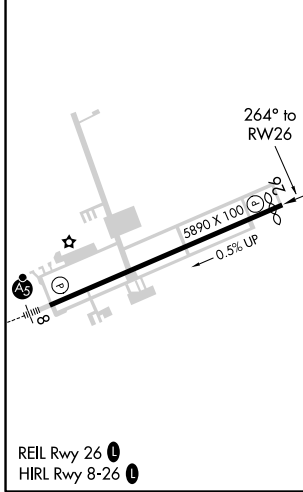
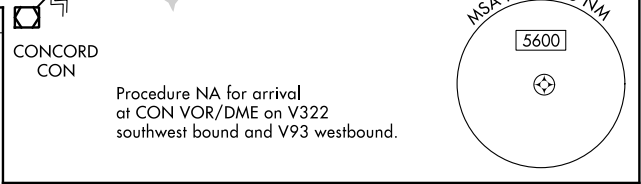


Procedure NA for arrivals at GRUMP on V496 northwest bound and V322 southwest bound.

▲ 1481±

4000 to DOJEN
060° (30)

ELEV 545	D	TDZE 533
----------	----------	----------



CATEGORY	A	B	C	D
LNAV MDA	1420-1¼ 875 (900-1¼)	887 (900-1¼)	1420-2¾ 887 (900-2¾)	1420-3 887 (900-3)
C CIRCLING	1420-1¼ 875 (900-1¼)	1600-1½ 1055 (1100-1½)	2160-3 1615 (1700-3)	2860-3 2315 (2400-3)

NE-1, 17 JUN 2021 to 15 JUL 2021

NE-1, 17 JUN 2021 to 15 JUL 2021