

WAAS CH <b>69612</b> <b>W14A</b>	APP CRS <b>146°</b>	Rwy Idg TDZE Apt Elev	<b>6157</b> <b>77</b> <b>80</b>
--	------------------------	-----------------------------	---------------------------------------

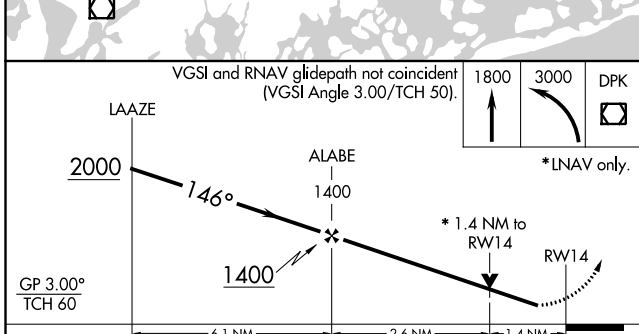
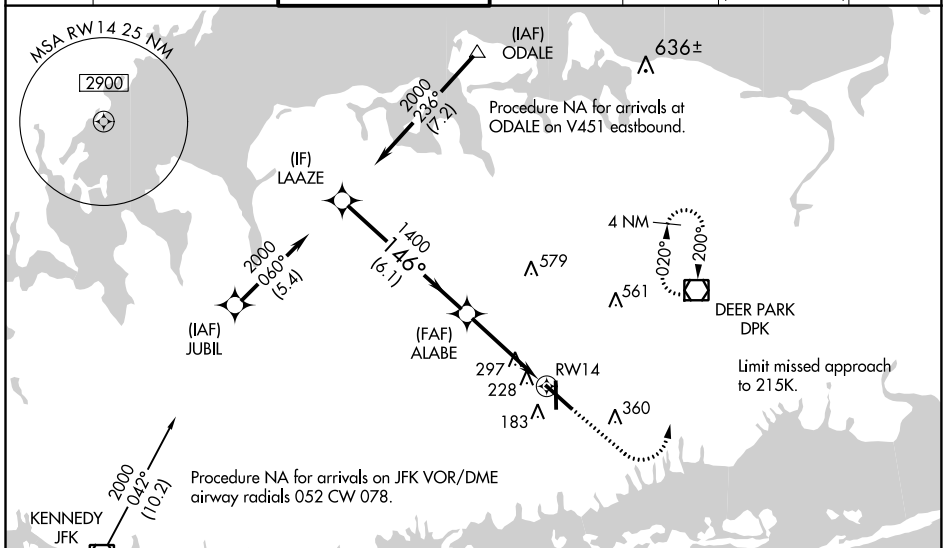
# RNAV (GPS) Y RWY 14

REPUBLIC (F/RG)

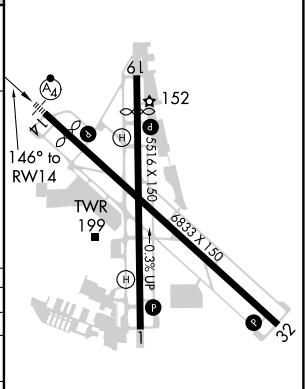
**⚠** Inop table does not apply to LPV. For uncompensated Baro-VNAV systems, LNAV/VNAV NA below -15°C (5°F) or above 54°C (130°F). DME/DME RNP-0.3 NA. For inop MALSR: increase LNAV/VNAV all Cats visibility to 1; LNAV Cats A/B visibility to 1; LNAV Cats C/D visibility to 1½. Baro-VNAV and VDP NA when using Islip altimeter setting. When local altimeter setting not received, use Islip altimeter setting; increase LPV all Cats DA to 314; increase LNAV/VNAV all Cats DA to 426; increase all MDA 40 feet and Circling Cats C/D visibility ¼ mile; inop table does not apply to LPV; for inop MALSR increase LNAV/VNAV all Cats visibility to 1½ and LNAV Cats A/B visibility to 1.

**MALSR**  
= MISSED APPROACH:  
Climb to 1800 then climbing left turn to 3000 direct DPK VOR/DME and hold, continue climb-in-hold to 3000.

ATIS <b>126.65</b>	NEW YORK APP CON <b>128.125 269.0</b>	REPUBLIC TOWER ★ <b>118.8</b> (CTAF) <b>0 279.65</b>	GND CON <b>121.6 269.6</b>	CLNC DEL <b>128.25</b>	CLNC DEL <b>128.25</b> (When twr closed)	UNICOM <b>122.95</b>
-----------------------	--	---	-------------------------------	---------------------------	--	-------------------------



ELEV 80	D TDZE 77
---------	-----------



CATEGORY	A	B	C	D
LPV DA		277-¾	200 (200-¾)	
LNAV/VNAV DA		389-¾	312 (400-¾)	
LNAV MDA	560-¾ 483 (500-¾)		560-1 483 (500-1)	
CIRCLING	560-1 480 (500-1)	600-1 520 (600-1)	720-1¾ 640 (700-1¾)	720-2 640 (700-2)

REIL Rwy 1, 19, and 32 **Ⓛ**  
MIRL Rwy 1-19 **Ⓛ**  
HIRL Rwy 14-32 **Ⓛ**

NE-2, 17 JUN 2021 to 15 JUL 2021

NE-2, 17 JUN 2021 to 15 JUL 2021