

WAAS CH 90201 W22A	APP CRS 226°	Rwy Idg TDZE Apt Elev	6604 979 979
--	------------------------	-----------------------------	---

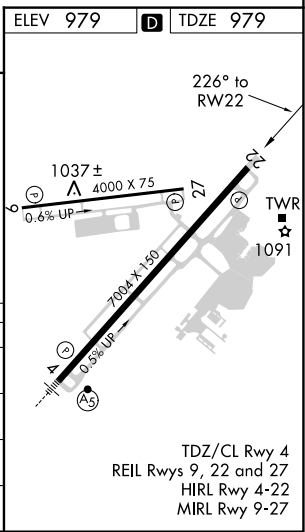
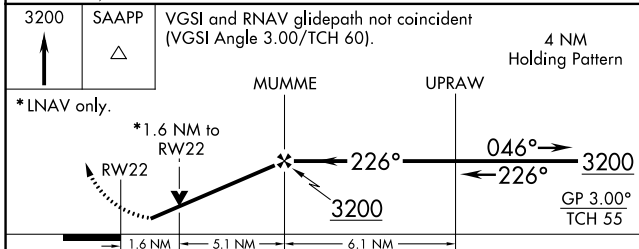
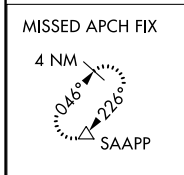
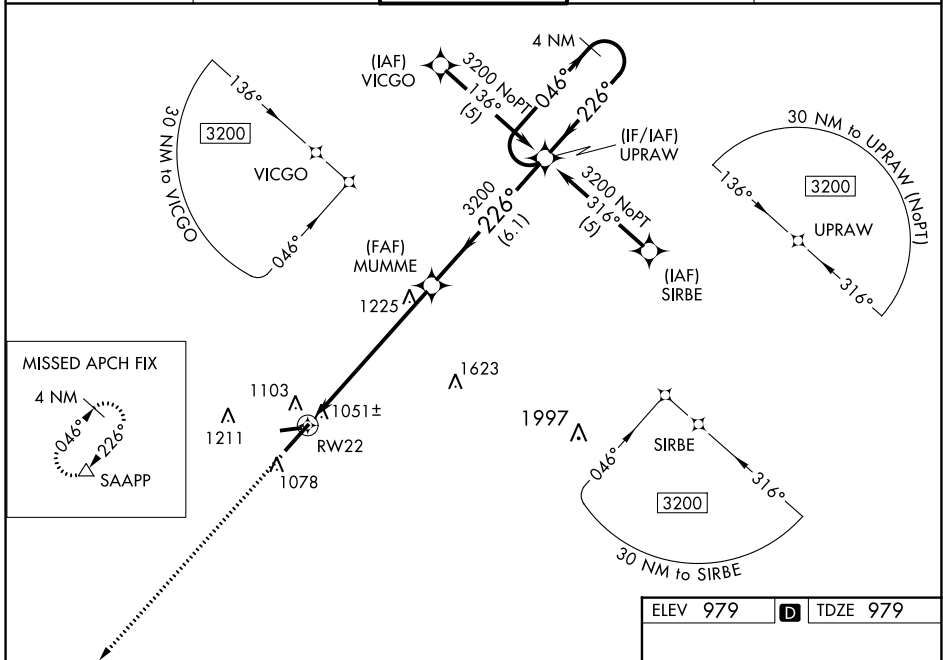
RNAV (GPS) RWY 22

BLUE GRASS (LEX)

⚠ For uncompensated Baro-VNAV systems, LNAV/VNAV NA below -16°C (4°F) or above 47°C (117°F). DME/DME RNP-0.3 NA. When local altimeter setting not received, use Frankfort altimeter setting: increase LPV DA to 1329 feet and all visibilities ¼ SM; increase LNAV/VNAV DA to 1434 feet and all visibilities ¼ SM; increase all MDAs 80 feet and visibility Cats C and D ¼ SM. Baro-VNAV and VDP NA when using Frankfort altimeter setting. Visibility reduction by helicopters NA.

⚠ MISSED APPROACH: Climb to 3200 direct SAAPP and hold.

ATIS 126.3	LEXINGTON APP CON 120.15 259.3	LEXINGTON TOWER 119.1 257.8	GND CON 121.9	CLNC DEL 132.35
----------------------	--	--	-------------------------	---------------------------



CATEGORY	A	B	C	D
LPV DA	1267-1		288 (300-1)	
LNAV/VNAV DA	1372-1¼		393 (400-1¼)	
LNAV MDA	1520-1	541 (600-1)	1520-1½ 541 (600-1½)	1520-1¾ 541 (600-1¾)
C CIRCLING	1520-1	541 (600-1)	1520-1½ 541 (600-1½)	1600-2 621 (700-2)

TDZ/CL Rwy 4
REIL Rwys 9, 22 and 27
HIRL Rwy 4-22
MIRL Rwy 9-27

SE-1, 17 JUN 2021 to 15 JUL 2021

SE-1, 17 JUN 2021 to 15 JUL 2021