

APP CRS 300°	Rwy Idg 7000
	TDZE 1232
	Apt Elev 1249

RNAV (RNP) Z RWY 30

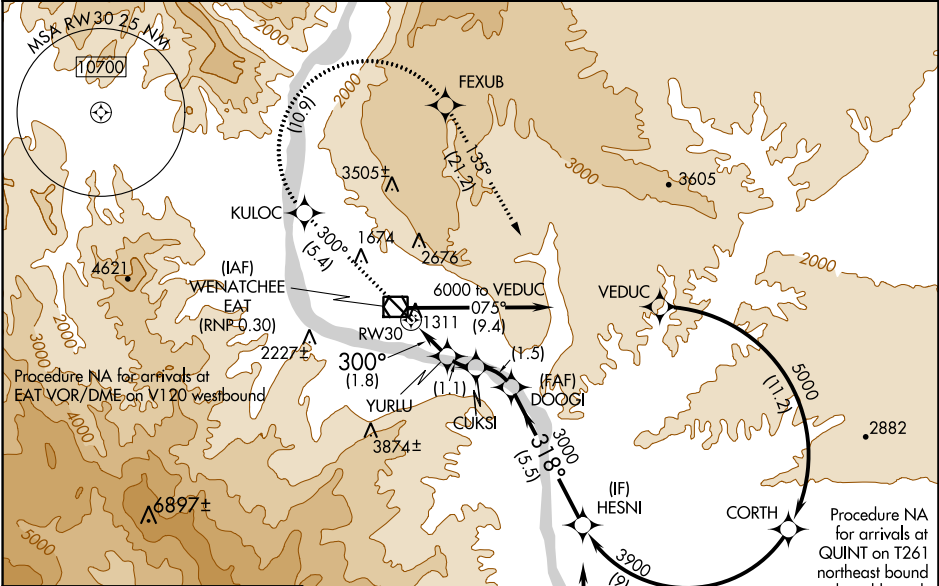
PANGBORN MEML (EAT)

⚠ -7°C For uncompensated Baro-VNAV systems, procedure NA below -10°C (14°F) or above 44°C (111°F). RF required. GPS required. FD or HUD required.

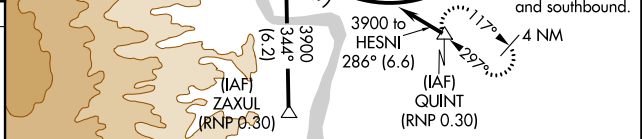
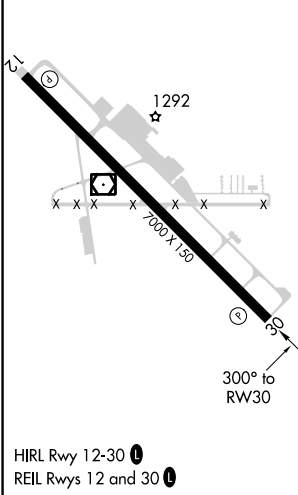
MISSED APPROACH: Climb to 6000 on track 300° to KULOC, right turn to FEXUB, and on track 135° to QUINT and hold.

*Missed approach requires minimum climb of 320 feet per NM to 5500.
#Missed approach requires minimum climb of 325 feet per NM to 5500.

ASOS 119.925	SEATTLE CENTER 126.1	UNICOM 123.0 (CTAF) 📻
------------------------	--------------------------------	--



ELEV 1249	D	TDZE 1232
-----------	----------	-----------



6000	KULOC	FEXUB	tr 135°	QUINT	HESNI
tr 300°					
VGSi and RNAV glidepath not coincident (VGSi Angle 4.30/TCH 46).					DOOGI
RW30	YURLU	CUKSI	3000	3900	GP 3.60° TCH 60
	1979	2411	3000		
			318°		
			300°		
	1.8 NM	1.1 NM	1.5 NM	5.5 NM	

CATEGORY	A	B	C	D
RNP 0.17 DA*	1595-1 363 (400-1)			NA
RNP 0.30 DA#	1686-1 3/8 454 (500-1 3/8)			NA

AUTHORIZATION REQUIRED

NW-1, 17 JUN 2021 to 15 JUL 2021

NW-1, 17 JUN 2021 to 15 JUL 2021