

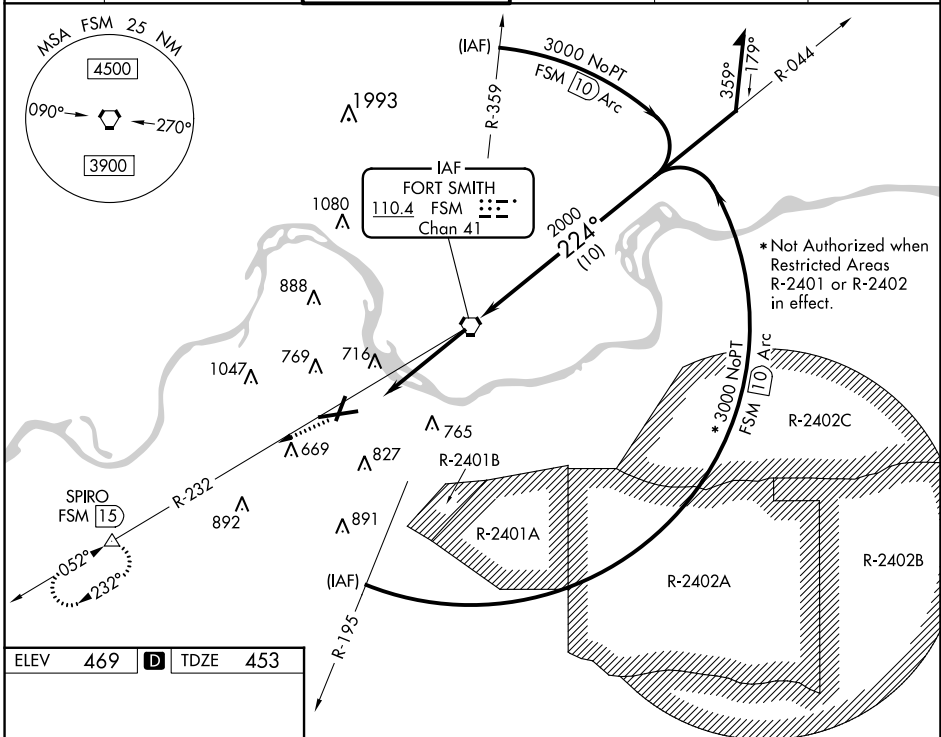
VORTAC FSM <b>110.4</b> Chan <b>41</b>	APP CRS <b>224°</b>	Rwy Idg <b>8017</b> TDZE <b>453</b> Apt Elev <b>469</b>
--	------------------------	---

# VOR or TACAN RWY 25

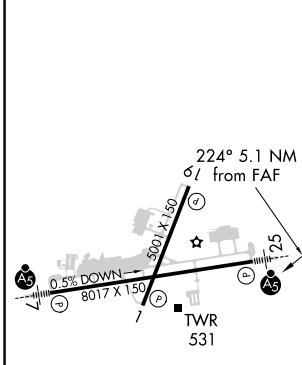
FORT SMITH RGNL (FSM)

<b>ASR</b> Inoperative table does not apply. Circling NA northwest of Rwy 7 and 19 for Cat E. Circling Cat E NA when R-2401B active.	<b>MALSR</b> 	<b>MISSED APPROACH:</b> Climb to 4000 via FSM R-232 to SPIRO Int/1.5 DME and hold.
--	------------------	--

<b>ATIS</b> <b>126.3</b>	<b>RAZORBACK APP CON*</b> <b>120.9 343.75</b>	<b>FORT SMITH TOWER*</b> <b>118.3 (CTAF) 323.175</b>	<b>GND CON</b> <b>121.9 275.8</b>	<b>CLNC DEL</b> <b>133.85 278.3</b>	<b>UNICOM</b> <b>122.95</b>
-----------------------------	--	---	--------------------------------------	--	--------------------------------

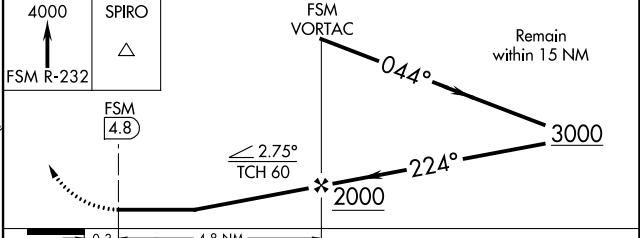


ELEV 469	<b>D</b>	TDZE 453
----------	----------	----------



<b>CATEGORY</b>	A	B	C	D	E
<b>S-25</b>	980-1	527 (600-1)	980-1½ 527 (600-1½)	980-1¾ 527 (600-1¾)	980-2 527 (600-2)
<b>CIRCLING</b>	1140-1	671 (700-1)	1400-2¾ 931 (1000-2¾)	1400-3	931 (1000-3)

## DME REQUIRED



SC-1, 17 JUN 2021 to 15 JUL 2021

SC-1, 17 JUN 2021 to 15 JUL 2021