

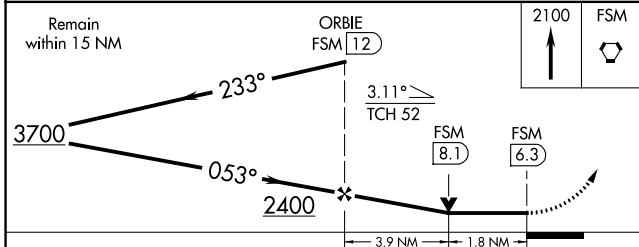
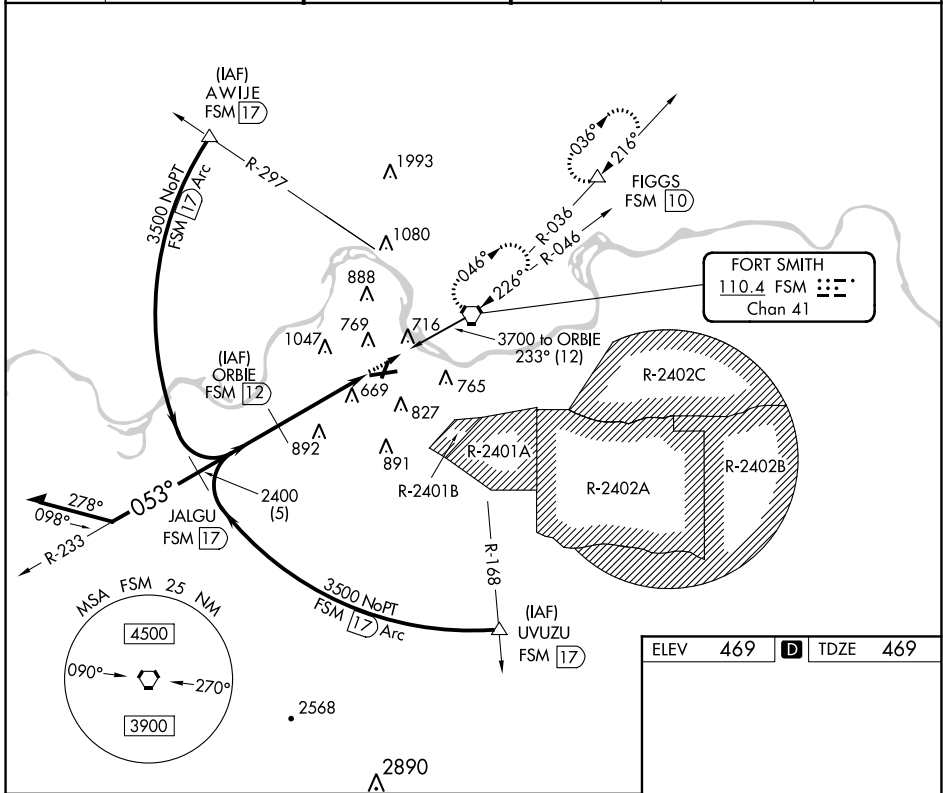
VORTAC FSM 110.4 Chan 41	APP CRS 053°	Rwy Idg TDZE 469 Apt Elev 469
---------------------------------------	------------------------	---

VOR/DME or TACAN RWY 7

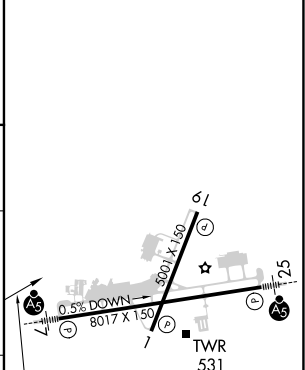
FORT SMITH RGNL (FSM)

 Inoperative table does not apply. Circling NA northwest of Rwy 7 and 19 for Cat E. Circling Cat E NA when R-2401B active. ASR	MALSR 	MISSED APPROACH: Climb to 2100 direct FSM VORTAC and hold. (TACAN aircraft climbing left turn to 4000 direct FSM VORTAC then via R-036 to FIGGS 10 DME and hold northeast, right turn 216° inbound.)			
		ATIS 126.3	RAZORBACK APP CON * 120.9 343.75	FORT SMITH TOWER * 118.3 (CTAF) 323.175	GND CON 121.9 275.8

ATIS 126.3	RAZORBACK APP CON * 120.9 343.75	FORT SMITH TOWER * 118.3 (CTAF) 323.175	GND CON 121.9 275.8	CLNC DEL 133.85 278.3	UNICOM 122.95
----------------------	--	---	-------------------------------	---------------------------------	-------------------------



ELEV 469		TDZE 469
----------	--	----------



CATEGORY	A	B	C	D	E
S-7	1080-1 611 (700-1)		1080-1 3/4 611 (700-1 3/4)	1080-2 611 (700-2)	1080-2 1/4 611 (700-2 1/4)
CIRCLING	1140-1 671 (700-1)		1400-2 3/4 931 (1000-2 3/4)	1400-3 931 (1000-3)	

HIRL Rwy 7-25	MIRL Rwy 1-19
---------------	---------------

SC-1, 17 JUN 2021 to 15 JUL 2021

SC-1, 17 JUN 2021 to 15 JUL 2021