

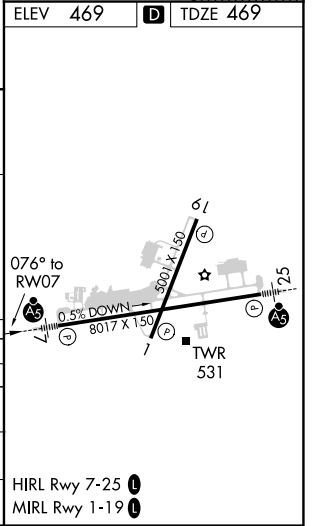
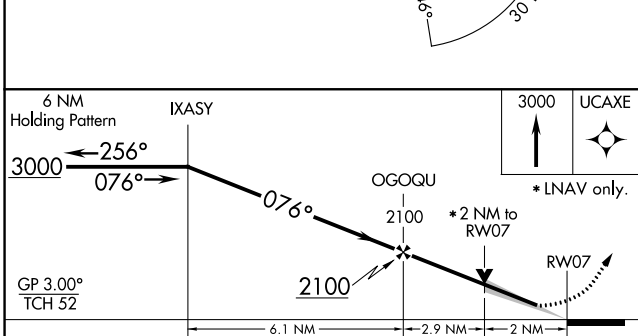
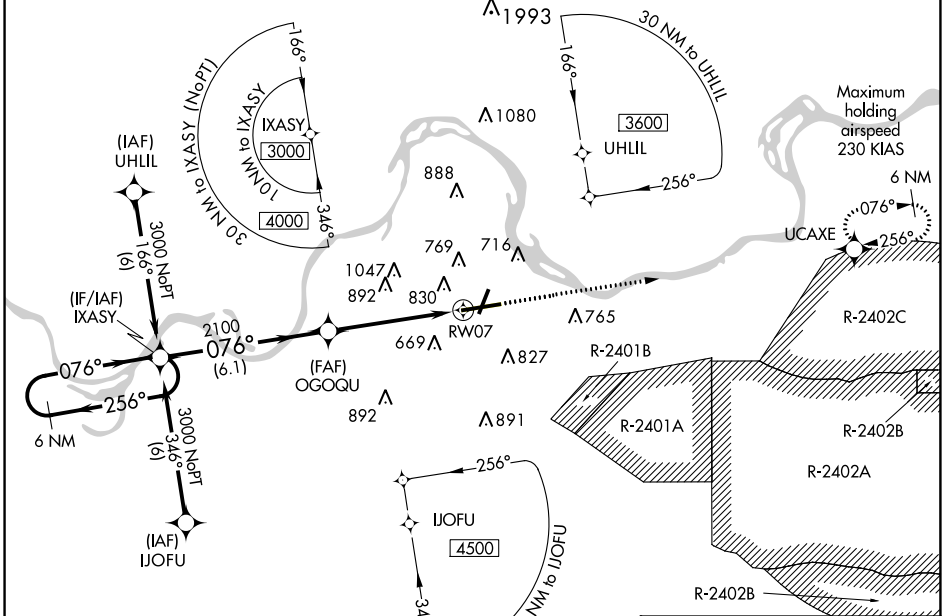
WAAS CH 77917 W07A	APP CRS 076°	Rwy Idg TDZE Apt Elev	8017 469 469
--	------------------------	-----------------------------	---

RNAV (GPS) RWY 7

FORT SMITH RGNL (F'SM)

RNP APCH.	<p>▲ For inop ALS, increase LPV Cat E visibility to $\frac{3}{4}$, LNAV/VNAV Cat E visibility to $2\frac{1}{4}$ and LNAV Cat E visibility to $2\frac{1}{2}$. Circling NA for Cat E northwest of Rwy 7 and 19. For uncompensated Baro-VNAV systems, LNAV/VNAV NA below -15°C or above 48°C. Circling Cat E NA when R-2401B active.</p>	MALSR 	MISSED APPROACH: Climb to 3000 direct UCAXE and hold.
-----------	--	-----------	--

ATIS 126.3	RAZORBACK APP CON * 120.9 343.75	FORT SMITH TOWER * 118.3 (CTAF) 0 323.175	GND CON 121.9 275.8	CLNC DEL 133.85 278.3	UNICOM 122.95
----------------------	--	---	-------------------------------	---------------------------------	-------------------------



CATEGORY	A	B	C	D	E
LPV DA		669- $\frac{1}{2}$	200 (200- $\frac{1}{2}$)		
LNAV/VNAV DA		1085- $1\frac{3}{4}$	616 (700- $1\frac{3}{4}$)		
LNAV MDA	1140- $\frac{1}{2}$ 671 (700- $\frac{1}{2}$)	1140- $1\frac{1}{2}$ 671 (700- $1\frac{1}{2}$)	1140- $1\frac{3}{4}$ 671 (700- $1\frac{3}{4}$)	1140-2 671 (700-2)	
CIRCLING	1140-1 671 (700-1)	1400- $2\frac{3}{4}$ 931 (1000- $2\frac{3}{4}$)	1400-3 931 (1000-3)		

SC-1, 17 JUN 2021 to 15 JUL 2021

SC-1, 17 JUN 2021 to 15 JUL 2021