

WAAS CH <b>58217</b> <b>W01A</b>	APP CRS <b>016°</b>	Rwy Idg TDZE Apt Elev	<b>5001</b> <b>449</b> <b>469</b>
--	------------------------	-----------------------------	---

# RNAV (GPS) RWY 1

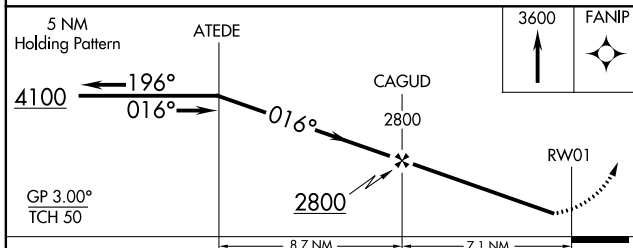
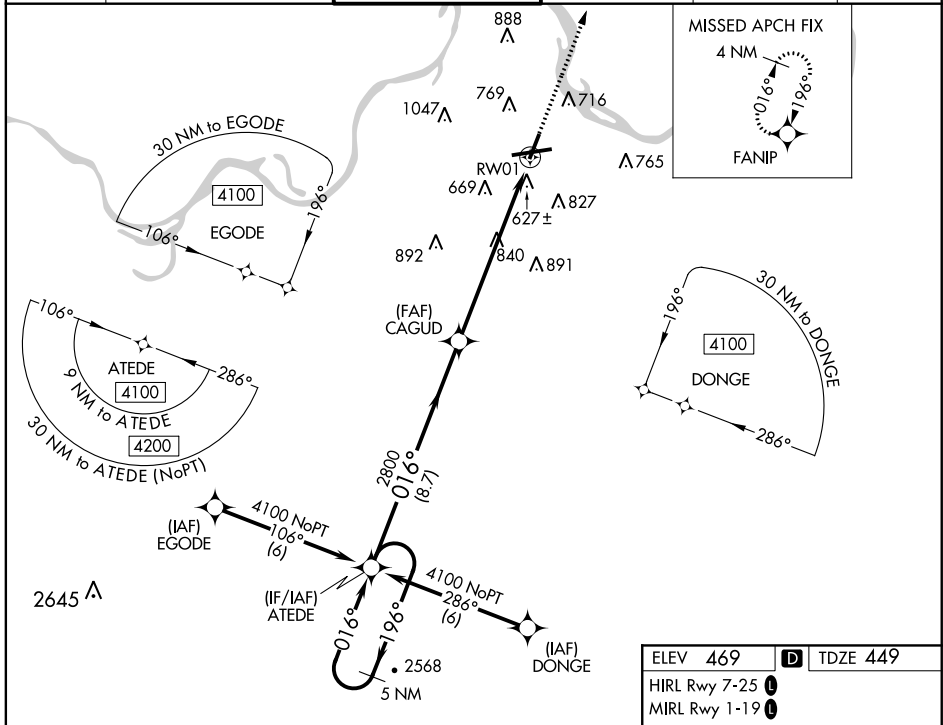
FORT SMITH RGNL (FSM)

RNP APCH.

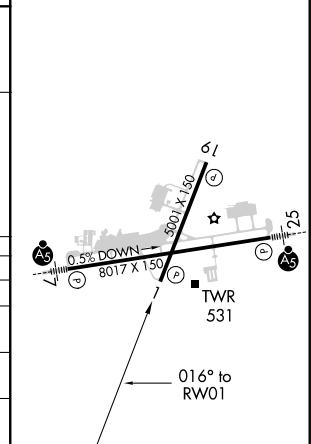
**▽** For uncompensated Baro-VNAV systems, LNAV/VNAV NA below -15°C or above 48°C. Rwy 1 helicopter visibility reduction below ¾ SM NA.  
**△** ASR

MISSED APPROACH: Climb to 3600 direct FANIP and hold, continue climb-in-hold to 3600.

ATIS <b>126.3</b>	RAZORBACK APP CON ★ <b>120.9 343.75</b>	FORT SMITH TOWER ★ <b>118.3 (CTAF) 323.175</b>	GND CON <b>121.9 275.8</b>	CLNC DEL <b>133.85 278.3</b>	UNICOM <b>122.95</b>
----------------------	--	---	-------------------------------	---------------------------------	-------------------------



ELEV 469	<b>D</b> TDZE 449
HIRL Rwy 7-25	<b>1</b>
MIRL Rwy 1-19	<b>1</b>



CATEGORY	A	B	C	D
LPV DA		705-1	256 (300-1)	
LNAV/VNAV DA		942-1¾	493 (500-1¾)	
LNAV MDA	1160-1	711 (700-1)	1160-2 711 (700-2)	1160-2¼ 711 (700-2¼)
CIRCLING	1160-1	691 (700-1)	1400-2¾ 931 (1000-2¾)	1400-3 931 (1000-3)

SC-1, 17 JUN 2021 to 15 JUL 2021

SC-1, 17 JUN 2021 to 15 JUL 2021