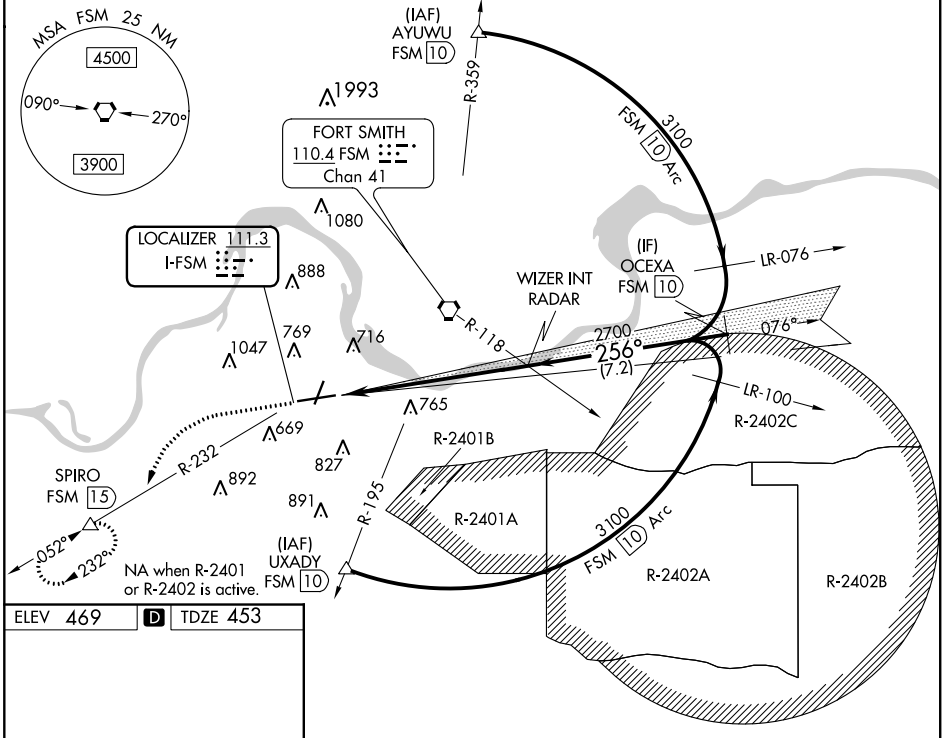


LOC I-FSM 111.3	APP CRS 256°	Rwy Idg TDZE Apt Elev	8017 453 469
---------------------------	------------------------	-----------------------------	-----------------------------------------

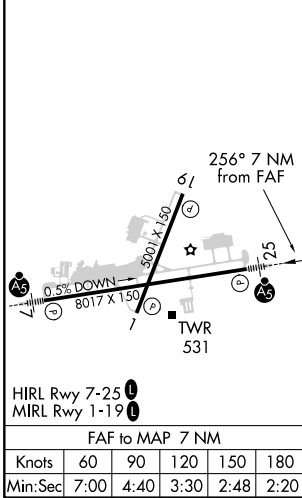
ILS or LOC RWY 25

FORT SMITH RGNL (FSM)

DME required.		MALS	MISSED APPROACH: Climb to 1400 then climbing left turn to 4000 on heading 220° and FSM VORTAC R-232 to SPIRO/FSM 15 DME and hold, continue climb-in-hold to 4000.		
⚠ Circling NA for Cat E when R-2401B active. Circling NA for Cat E NW of Rwys 7 and 19. For inop ALS, increase S-ILS 25 Cat E visibility to RVR 4000 and S-LOC 25 Cat C/D/E to 1½ SM. * RVR 1800 authorized with the use of FD or AP or HUD to DA.					
ATIS 126.3	RAZORBACK APP CON* 120.9 343.75	FORT SMITH TOWER* 118.3 (CTAF) 0 323.175	GND CON 121.9 275.8	CLNC DEL 133.85 278.3	UNICOM 122.95



ELEV 469	D	TDZE 453
-----------------	----------	-----------------



1400	4000	FSM R-232	SPIRO	OCEXA	
↑	hdg° 220	△	△	FSM 10	
WIZER INT RADAR 2700		3100			
2700		256°			
7 NM		7.2 NM			
GS 2.96° TCH 56					
CATEGORY	A	B	C	D	E
S-ILS 25*	653/24 200 (200-½)				
S-LOC 25	1020/24 567 (600-½)		1020-1¼ 567 (600-1¼)		
<input checked="" type="checkbox"/> CIRCLING	1140-1 671 (700-1)		1400-2¾ 931 (1000-2¾)		1400-3 931 (1000-3)

SC-1, 17 JUN 2021 to 15 JUL 2021

SC-1, 17 JUN 2021 to 15 JUL 2021