


| | | | |
|---------------------------|------------------------|-----------------------------|---|
| LOC I-IAG 110.1 | APP CRS 280° | Rwy ldg TDZE Apt Elev | 9129 588 592 |
|---------------------------|------------------------|-----------------------------|---|

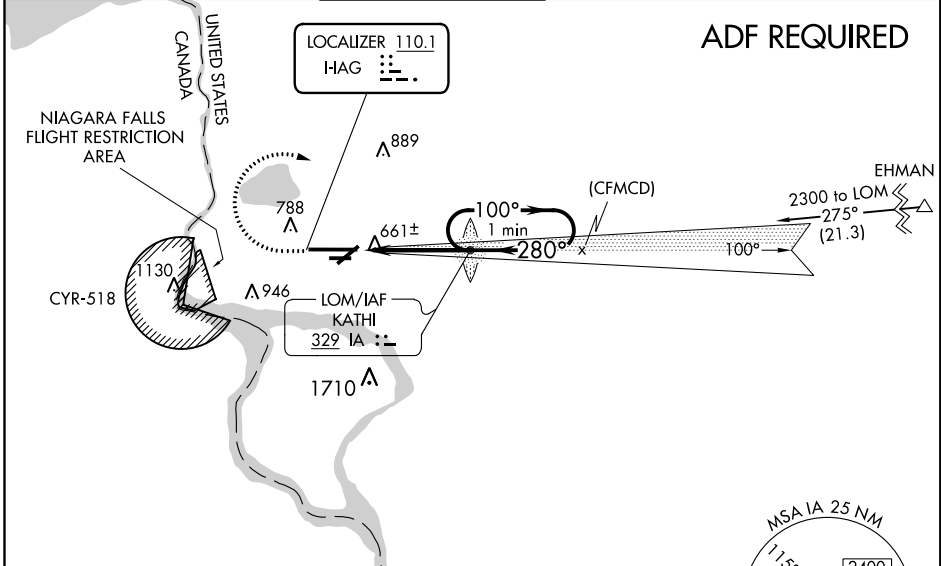
ILS Y or LOC Y RWY 28R

NIAGARA FALLS INTL (IAG)

⚠ ADF Required. When local altimeter setting not received, use Buffalo Niagara Intl altimeter setting and increase all DA 51 feet and all MDA 60 feet; increase Circling Cat C and D visibility ¼ SM. For inop MALSRL, increase S-ILS 28R all Cats visibility to RVR 4500 and S-LOC 28R all Cats visibility to RVR 5000. For inop MALSRL when using Buffalo Niagara Intl altimeter setting, increase S-ILS 28R all Cats visibility to RVR 4500, S-LOC 28R Cats A/B visibility to RVR 5000, and S-LOC 28R Cats C/D visibility to RVR 6000. Rwy 28R helicopter visibility reduction below ¾ SM NA. Rwy 6, 10R, 24, 28L helicopter visibility reduction below 1 SM NA. Circling Rwy 6, 10R, 24, 28L NA at night.

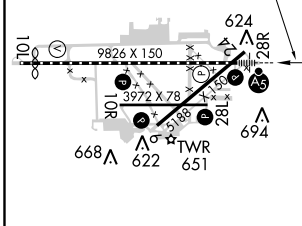
MALSRL

MISSED APPROACH:
 Climb to 1200 then climbing right turn to 3200 on heading 050° then direct KATHI LOM and hold.

| | | | | | |
|----------------------------|---------------------------------------|--|-------------------------------|---------------------------------|-------------------------|
| ATIS 120.8 269.4 | BUFFALO APP CON 126.5 317.6 | NIAGARA TOWER* 118.5 (CTAF) 0 349.0 | GND CON 125.3 275.8 | CLNC DEL 119.25 251.1 | UNICOM 122.95 |
|----------------------------|---------------------------------------|--|-------------------------------|---------------------------------|-------------------------|



| | | |
|----------|----------|----------|
| ELEV 592 | D | TDZE 588 |
|----------|----------|----------|

280° 4.1 NM from FAF

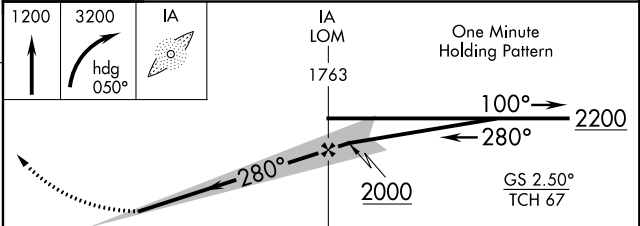


TDZ/CL Rwy 28R
 REIL Rws 6, 10R, 24, and 28L
 HIRL Rwy 10L-28R
 MIRL Rws 6-24 and 10R-28L

FAF to MAP 4.1 NM

| | | | | | |
|---------|------|------|------|------|------|
| Knots | 60 | 90 | 120 | 150 | 180 |
| Min:Sec | 4:06 | 2:44 | 2:03 | 1:38 | 1:22 |

C CIRCLING



| | | | | |
|-------------------|--------|-------------|-----------------------|---------------------------|
| CATEGORY | A | B | C | D |
| S-ILS 28R | | 838/40 | 250 (300-¾) | |
| S-LOC 28R | | 920/40 | 332 (400-¾) | |
| C CIRCLING | 1100-1 | 508 (600-1) | 1280-2 688 (700-2) | 1280-2 ¼ 688 (700-2 ¼) |

ILS Y or LOC Y RWY 28R

NE-2, 17 JUN 2021 to 15 JUL 2021

NE-2, 17 JUN 2021 to 15 JUL 2021